



Pattern Collection: Home



Aeolis Throw

Designed by Amy Gunderson

SIZES

One Size

FINISHED MEASUREMENTS

Length: 51"

Width: 43"

MATERIALS

Universal Yarn Deluxe Worsted Superwash (100% superwash wool; 100g/220 yds)

- 743 Bashful Pink (A) – 3 skeins
- 735 Ebony (B) – 1 skein

Universal Yarn Classic Shades (70% acrylic, 30% wool; 100g/197 yds)

- 734 Cool Blazes (C) – 7 skeins

Hook: US Size H-8 (5 mm) or size needed to obtain gauge

Notions: tapestry needle

GAUGE

4 reps of Shells patt = 4½" wide x 2½" tall

1 Motif = 8" square

Save time, check your gauge.

Knit. Relax. Smile. Repeat!

2020 © Universal Yarn, Inc.

All rights reserved.

This pattern may not be reproduced for business, trade or sale.

PATTERN NOTES

This colorful throw combines solid Deluxe Worsted Superwash with self-shading Classic Shades.

The center/Shells section is crocheted first. Then, motifs are worked from the center out and seamed to the center section. Finally, a Shell edging finishes the piece off.

STITCH GUIDE

Shell: [2 dc, ch 1, 2 dc] in ch or sp indicated.

Shells

(begins with multiple of 4 chs + 3)

Row 1: Dc in fourth ch from hk, sk next 2 chs, [Shell in next ch, sk next 3 chs] to last 5 chs, Shell in next ch, sk next 2 chs, dc in last 2 chs, turn.

Row 2: Ch 3 (counts as dc), dc in next dc, [Shell in Shell] to last 2 dc, dc in last 2 dc, turn.

Rep Row 2 for patt.

THROW

Center

With A, ch 83. Work in Shells patt for 52 rows. Fasten off.

Center Edging

Join B to top right corner of Center.

Rnd 1: Ch 3 (counts as dc), 2 dc in same dc, dc in each dc across to last dc, 5 dc in last (corner) dc, work 2 dc in the side of each row to beg-ch edge, work 5 dc in corner, dc in each ch of beg-ch to corner, 5 dc in corner st, work 2 dc in the side of each row up to beg ch-3, 2 dc in same st as beg ch-3, join with sl st to beg ch-3. Fasten off.

Motif (make 18)

With C, ch 5, join with sl st to form ring.

Rnd 1: Ch 3 (counts as dc), 15 dc in ring, join with sl st to top of beg ch 3 – 16 dc.

Rnd 2: Ch 3 (counts as dc), [ch 1, dc in next dc] around, ch 1, join with sl st to top of beg ch 3 – 16 dc, 16 ch-1 sps.

Rnd 3: Ch 3 (counts as dc), [2 dc in ch-1 sp, dc in dc] around, ending with 2 dc in last ch-1 sp, join with sl st to top of beg ch-3 – 48 dc.

Rnd 4: Sc in top of ch 3, [ch 10, sk next 2 dc, sc in next dc, ch 3, sk next 2 dc, sc in next dc, ch 5, sk next 2 dc, sc in next dc, ch 3, sk next 2 dc, sc in next dc] 3 times, ch 10, sk next 2 dc, sc in next dc, ch 3, sk next 2 dc, sc in next dc, ch 5, sk next 2 dc, sc in next dc, ch 3, sk next 2 dc, join with sl st to beg sc.

Rnd 5: Ch 3 (counts as dc), [4 dc, ch 3, 5 dc] in ch-10 sp, sc in ch-3 sp, 7 dc in ch-5 sp, sc in ch-3 sp, {[5 dc, ch 3, 5 dc] in ch-10 sp, sc in ch-3 sp, 7 dc in ch-5 sp, sc in ch-3 sp} 3 times, join with sl st to top of beg ch 3.

Rnd 6: Ch 3 (counts as dc), ch 5, {[sc, ch 3, sc] in ch-3 sp, ch 5, sk next 5 dc, dc in sc, ch 3, sk next 3 dc, sc in next dc, ch 3, sk next 3 dc, dc in sc, ch 5, sk next 5 dc} 3 times, [sc, ch 3, sc] in ch-3 sp, ch 5, sk next 5 dc, dc in sc, ch 3, sk next 3 dc, sc in next dc, ch 3, sk next 3 dc, join with sl st to top of beg ch-3.

Rnd 7: Ch 3 (counts as dc), 4 dc in ch-5 sp, {[3 dc, ch 3, 3 dc] in ch-3 sp, 5 dc in ch-5 sp, [3 dc in ch-3 sp] 2 times, 5 dc in ch-5 sp} 3 times, [3 dc, ch 3, 3 dc] in ch-3 sp, 5 dc in ch-5 sp, [3 dc in ch-3 sp] 2 times, join with sl st to top of beg ch-3.

Rnd 8: Sc in top of ch 3, sc in next 7 dc, [3 sc in ch-3 sp, sc in next 22 dc] 3 times, 3 sc in ch-3 sp, sc in next 14 dc, join with sl st to beg sc. Fasten off.

Assembly

Using diagram as a guide, sew sides of Motifs tog; also to Center Edging.

Outer Edging

Join B to any corner sc of a corner Motif.

Rnd 1: Ch 3 (counts as dc), dc in same sc, [dc in each sc to next corner sc (working dc2tog in last 2 and first 2 sc of each motif), Shell in corner sc] 3 times, dc in each sc to beg ch 3, 2 dc in same sc, ch 1, sc to beg dc to join, finishing the st with A. Break B.

Rnd 2: With A, ch 3 (counts as dc), dc in same sp, {sk next 2 dc, [Shell bet next 2 dc, sk next 4 dc] to 2 dc before corner ch-2 sp, Shell in corner ch-2 sp} 3 times, sk next 2 dc, [Shell bet next 2 dc, sk next 4 dc] to 2 dc before corner beg ch-3, 2 dc in same sp as beg ch-3, sc to beg ch-3 to join.

Knit. Relax. Smile. Repeat!

2020 © Universal Yarn, Inc.
All rights reserved.

This pattern may not be reproduced for business, trade or sale.

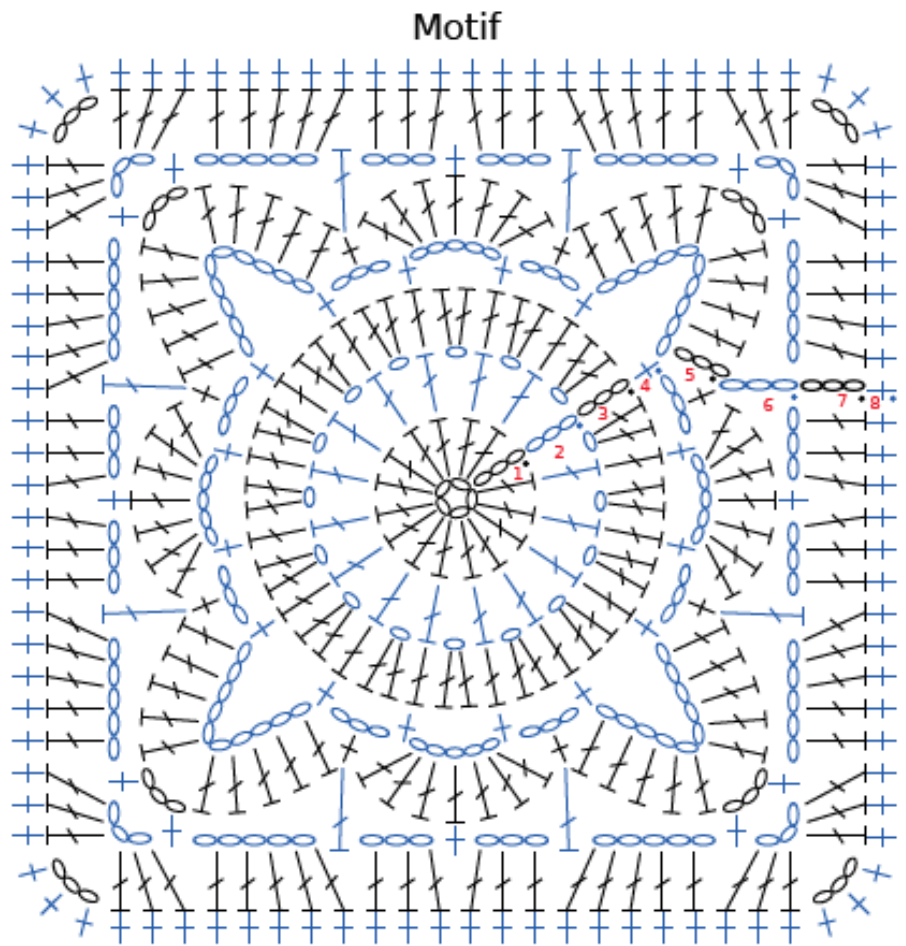
Rnd 3: Ch 3 (counts as dc), 2 dc in same sp, {Shell in Shell to next corner, [3 dc, ch 2, 3 dc] in corner ch-2} 3.

FINISHING

Block Strips to finished measurements and weave in ends. Using illustration as a visual guide, assemble blanket by sewing side seams.

Abbreviations

- beg** begin(ning)
- ch** chain
- dc** double crochet
- hk** hook
- patt** pattern
- sc** single crochet
- sl** slip
- sp** space(s)



Key

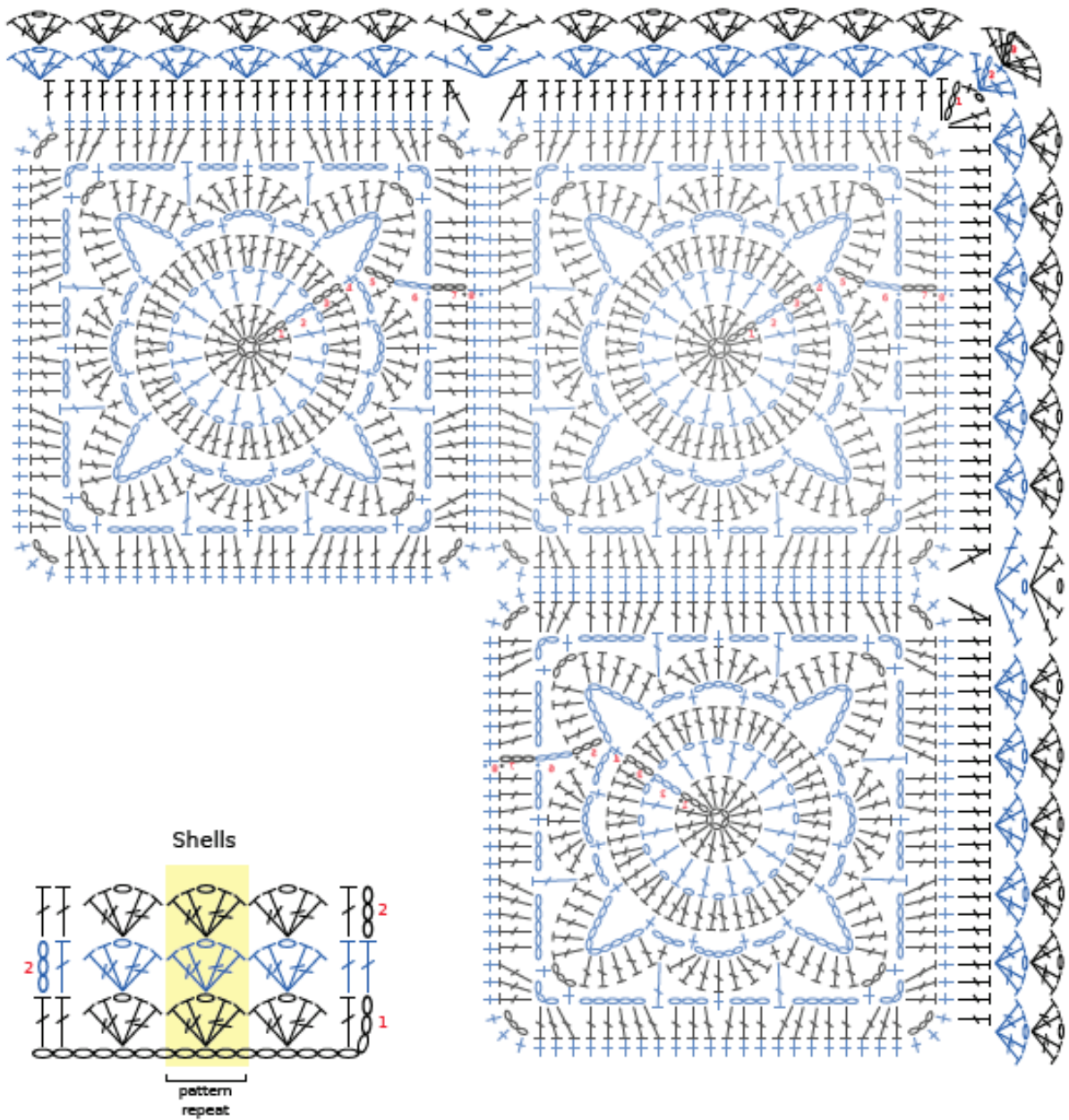
sl st	ch	sc	dc
•	○	+	↑

Knit. Relax. Smile. Repeat!

2020 © Universal Yarn, Inc.
All rights reserved.

This pattern may not be reproduced for business, trade or sale.

Outer Edging

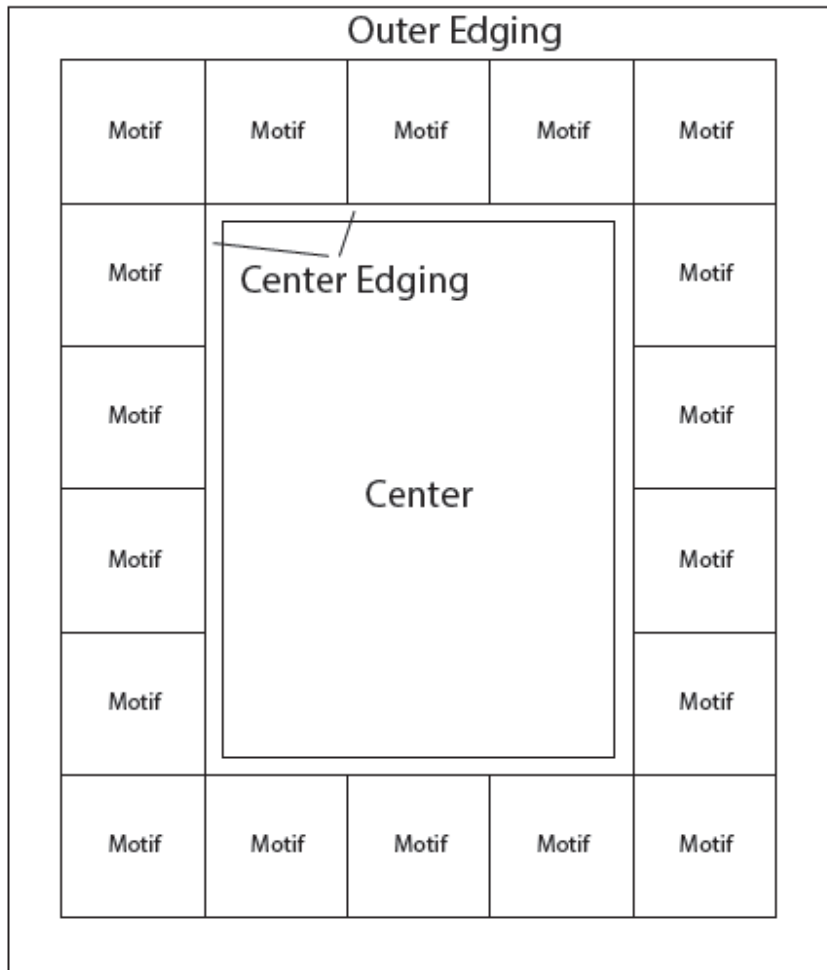


Knit. Relax. Smile. Repeat!

2020 © Universal Yarn, Inc.

All rights reserved.

This pattern may not be reproduced for business, trade or sale.



Knit. Relax. Smile. Repeat!

2020 © Universal Yarn, Inc.

All rights reserved.

This pattern may not be reproduced for business, trade or sale.