



Pattern Collection: Accessories



Arum Shawl

Designed by Rachel Brockman

SIZES

One Size

FINISHED MEASUREMENTS

Width (at cast-on edge): 25½"

Length: 67"

MATERIALS

Fibra Natura Kingston Tweed (50% wool, 25% alpaca, 25% mixed fiber; 50g/194 yds)

- 106 Olivine – 3 skeins

Needles: US Size 7 (4.5 mm) 16" circular or longer or size needed to obtain gauge

Notions: Tapestry needle, stitch markers

GAUGE

20 sts x 24 rows = 4" in Lace patt

Save time check your gauge.

PATTERN NOTES

Arum is a lacy, asymmetrical shawl inspired by the arrow-shaped leaves of the arum family of plants. These flowering plants, sometimes called arum lilies, feature beautiful flowers that come in a variety of colors. Warm, yet lightweight and airy, this shawl is optimal for mildly cool days. Kingston Tweed adds a touch of rustic texture.

This shawl is knit flat from the bottom up. After stitches are cast on and the pattern is established, stitches are gradually decreased ending with just two stitches. When working decreases in lace, maintain stitches in pattern as established. If there are not enough stitches to work decreases and corresponding increases in the pattern stitch, work these extra stitches in Stockinette or Reverse Stockinette instead (*i.e. knit the knits and purl the purls*).

STITCH GUIDE

Lace

(multiple of 23 sts)

Row 1 (RS): * P1, yo, ssk, k3, k2tog, k3, yo, k1, yo, k3, ssk, k3, k2tog, yo, p1; rep from * to end.

Row 2 (WS): * K2, p19, k2; rep from * to end.

Row 3: * P2, yo, ssk, k1, k2tog, k3, yo, k1, p1, k1, yo, k3, ssk, k1, k2tog, yo, p2; rep from * to end.

Row 4: * K3, p8, k1, p8, k3; rep from * to end.

Row 5: * P3, yo, sl 2-k1-p2sso, k3, yo, k1, p3, k1, yo, k3, sl 2-k1-p2sso, yo, p3; rep from * to end.

Row 6: * K4, p6, k3, p6, k4; rep from * to end.

Row 7: * P3, k2tog, k3, yo, k1, p5, k1, yo, k3, ssk, p3; rep from * to end.

Row 8: * K3, p6, k5, p6, k3; rep from * to end.

Row 9: * P2, k2tog, k3, yo, k1, p7, k1, yo, k3, ssk, p2; rep from * to end.

Row 10: * K2, p6, k7, p6, k2; rep from * to end.

Row 11: * P1, k2tog, k3, yo, k1, yo, ssk, p5, k2tog, yo, k1, yo, k3, ssk, p1; rep from * to end.

Row 12: * K1, p8, k5, p8, k1; rep from * to end.

Row 13: * P1, ssk, k2, yo, k3, yo, ssk, p3, k2tog, yo, k3, yo, k2, k2tog, p1; rep from * to end.

Row 14: * K1, p9, k3, p9, k1; rep from * to end.

Row 15: * P1, ssk, k1, yo, k5, yo, ssk, p1, k2tog, yo, k5, yo, k1, k2tog, p1; rep from * to end.

Row 16: * K1, p21, k1; rep from * to end.

Row 17: P1, ssk, yo, k7, yo, sl 2-k1-p2sso, yo, k7, yo, k2tog, p1; rep from * to end.

Row 18: Rep Row 16.

Rep Rows 1-18 for patt.

Seed

(multiple of 2 sts)

Row 1 (RS): * K1, p1; rep from * to end

Row 2 (WS): * P1, k1; rep from * to end

Rep Rows 1-2 for patt.

SHAWL

Bottom Border

Cast on 102 sts.

Row 1 (RS): K1, work in Seed patt to last st, k1.

Row 2 (WS): K1, work in Seed patt to last st, k1.

Rep Rows 1-2, 1 more time, then rep Row 1, 1 time.

Establish Pattern

Set-up Row (WS): K1, work in Seed patt over 4 sts, pm, work in Seed patt to last 5 sts, pm, work in Seed patt over 4 sts, k1.

Row 1 (RS): Cont as est'd to m, sl m, [work Row 1 of Lace patt] 4 times, sl m, cont as est'd to end.

Row 2: Cont as est'd to m, sl m, [work Row 2 of Lace patt] 4 times, sl m, cont as est'd to end.

Rows 1-2 establish patt. When working in Lace patt in the following section, work through Row 18 of patt, then continuously rep Rows 1-18.

Shape Shawl

Note: When working decreases in lace, maintain stitches in pattern as established. If there are not enough stitches to work decreases and corresponding increases in the pattern stitch, work these extra stitches in St or rev St instead (i.e. knit the knits and purl the purls).

Dec Row (RS): Cont as est'd to m, sl m, cont as est'd to 2 sts bef m, ssp, sl m, cont as est'd to end – 1 st dec'd.

Rep Dec Row every 4 rows, 90 more times – 90 sts dec'd, 11 sts rem. Work a WS row even, removing markers as you come to them.

Shape Tip

Note: This section is also charted for your convenience.

Row 1 (RS): K2, p1, k1, ssp, [k1, p1] 2 times, k1 – 1 st dec'd, 10 sts rem.

Row 2 (WS): [K1, p1] 2 times, k3, p1, k2.

Row 3: K2, [p1, k1] 4 times.

Row 4: Rep Row 2.

Row 5: K2, p1, ssp, [k1, p1] 2 times, k1 – 1 st dec'd, 9 sts rem.

Row 6: [K1, p1] 2 times, k2, p1, k2.

Row 7: K2, p2, [k1, p1] 2 times, k1.

Row 8: Rep Row 6.

Row 9: K2, ssp, [k1, p1] 2 times, k1 – 1 st dec'd, 8 sts rem.

Row 10: [K1, p1] 2 times, k4.

Row 11: K2, [p1, k1] 3 times.

Row 12: Rep Row 10.

Row 13: K1, ssp, [k1, p1] 2 times, k1 – 1 st dec'd, 7 sts rem.

Row 14: [K1, p1] 2 times, k3.

Row 15: [K1, p1] 3 times, k1.

Row 16: Rep Row 14.

Row 17: Ssk, [k1, p1] 2 times, k1 – 1 st dec'd, 6 sts rem.

Row 18: [K1, p1] 2 times, k2.

Row 19: K2, [p1, k1] 2 times.

Row 20: Rep Row 18.

Row 21: Ssk, [p1, k1] 2 times – 1 st dec'd, 5 sts rem.

Row 22: [K1, p1] 2 times, k1.

Row 23: [K1, p1] 2 times, k1.

Row 24: Rep Row 22.

Row 25: Ssk, k1, p1, k1 – 1 st dec'd, 4 sts rem.

Row 26: K1, p1, k2.

Row 27: K2, p1, k1.

Row 28: Rep Row 26.

Row 29: Ssk, p1, k1 – 1 st dec'd, 3 sts rem.

Rows 30-32: K1, p1, k1.

Row 33: Ssk, k1 – 1 st dec'd, 2 sts rem.

Row 34: Bind off rem sts.

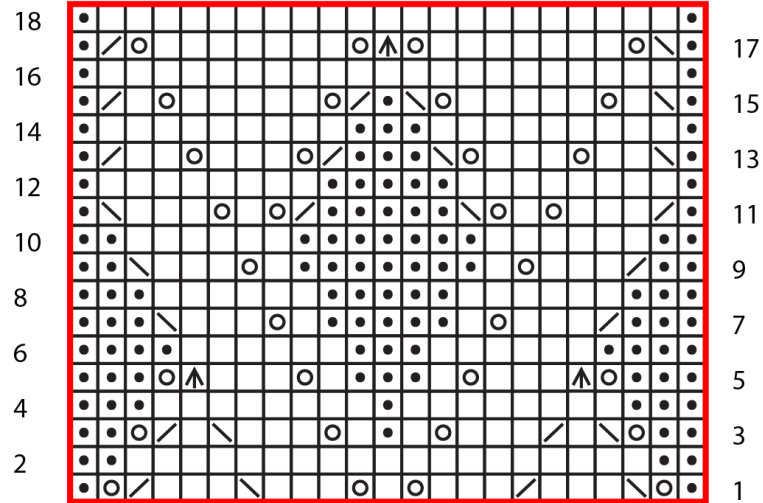
FINISHING

Weave in ends but do not trim. Wet or steam block, stretching to enhance lace. Once piece is fully dry, trim ends close to work.

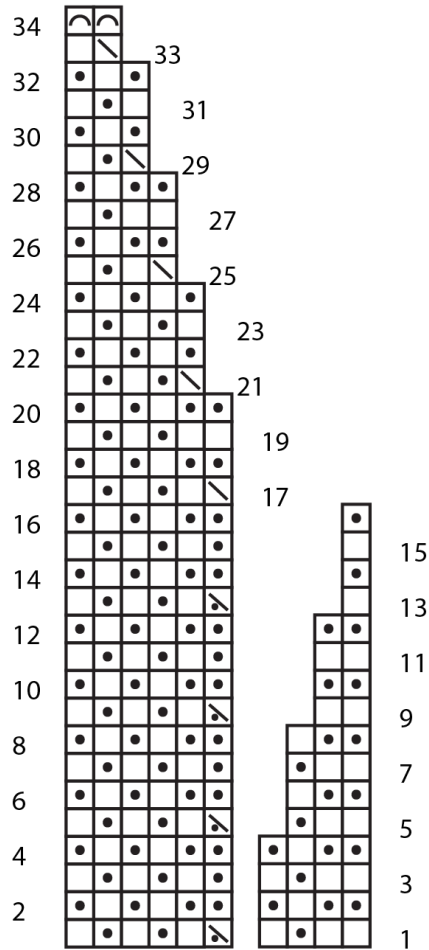
Abbreviations

bef	before
cont	continue
dec('d)	decrease(d)
est'd	established
k	knit
k2tog	knit 2 stitches together (1 st dec'd)
m	marker
ndl	needle
p	purl
patt	pattern
pm	place marker
psso	pass slipped stitch(es) over
rem	remain(ing)
rep	repeat
rev St st	reverse Stockinette stitch (purl on RS rows, knit on WS rows; in the rnd, purl every rnd)
RS	right side
sl	slip
ssk	slip next 2 sts individually knitwise, slip them back to left needle in this position, knit them together through the back loops (1 st dec'd)
ssp	slip next 2 sts individually knitwise, slip them back to left needle in this position, purl them together through the back loops (1 st dec'd)
St st	Stockinette stitch (knit on RS rows, purl on WS rows; in the rnd, knit every rnd)
st(s)	stitch(es)
WS	wrong side
yo	yarn over

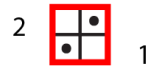
Lace



Shape Tip



Seed



Key

- pattern repeat
- | indicates marker
- knit on RS, purl on WS
- purl on RS, knit on WS
- yo
- / ssk
- \ k2tog
- ▲ sl 2-k1-p2sso
- / ssp
- ⤵ bind off