



## Pattern Collection: Women



### Atotoztlí

Designed by Amy Gunderson

### DIFFICULTY

Intermediate

### SIZES

Small (Medium, Large, 1X, 2X, 3X)  
*Shown in Small size with 3" of positive ease.*

### FINISHED MEASUREMENTS

**Bust:** 36 (41½, 44, 49½, 52, 57½)"  
Choose a size with up to 6" of positive ease.

### MATERIALS

**Universal Yarn Deluxe Worsted Tweed Superwash** (90% superwash wool, 7% acrylic, 3% viscose; 100g/218 yds)

- 907 Denim (MC) – 5 (6, 7, 8, 8, 9) balls
- 911 Walnut (CC1) – 1 (2, 2, 2, 2, 2) balls
- 910 Porcelain (CC2) – 1 (2, 2, 2, 2, 2) balls
- 904 Olive (CC3) – 1 (2, 2, 2, 2, 2) balls

**Needles:** US Size 8 (5 mm) set of dpns, straight, 16" circular *or size needed to obtain gauge*

US Size 7 (4.5 mm) straight *or size needed to obtain gauge*

US Size 6 (4 mm) set of dpns, straight, 16" circular *or size needed to obtain gauge*

*Knit. Relax. Smile. Repeat!*

2020 © Universal Yarn, Inc.

All rights reserved.

This pattern may not be reproduced for business, trade or sale.

**Notions:** Tapestry needle, stitch markers, stitch holders

### GAUGE

18 sts x 22 rows = 4" in stranded knitting using US Size 8 (5 mm)

18 sts x 26 rows = 4" in Textured Chevrons patt using US Size 7 (4.5mm)

18 sts x 40 rows = 4" in garter stitch using US Size 6 (4 mm)

### PATTERN NOTES

A turtleneck sweater may be good, but a cowl neck sweater might even better! Throw in a spunky stranded colorwork pattern and you have a perfect cold weather garment. Atotozli combines the lovely texture of Deluxe Worsted Tweed Superwash with a geometric multicolor pattern and textured body stitches for a whole lot of fun in one pretty pullover.

Back and Front are knit flat in rows. Sleeves are knit in the round to the Raglan Shaping section, and then worked back and forth in rows. Cowl neck is knit in the round.

When increasing or decreasing in stranded pattern, work the increased or decreased stitch in whatever the next color of the chart would be.

### STITCH GUIDE

#### Textured Chevrons

(multiple of 6 sts + 7)

**Row 1 (RS):** Knit.

**Row 2 (WS):** K1, \* p5, k1; rep from \* to end.

**Row 3:** P2, k3, \* p3, k3; rep from \* to last 2 sts, p2.

**Row 4:** P1, k2, \* [p1, k2] 2 times; rep from \* to last 4 sts, p1, k2, p1.

**Row 5:** K2, \* p3, k3; rep from \* to last 5 sts, p3, k2.

**Row 6:** P3, k1, \* p5, k1; rep from \* to last 3 sts, p3.

Rep Rows 1-6 for patt.

### BACK

With MC and Size 6 ndl, cast on 103 (115, 121, 133, 139, 151) sts.

### Hem

Knit 12 rows.

### Main Body

Switch to Size 7 ndl. Beg with RS Row 1, work in Textured Chevrons patt until piece meas 2" from cast-on edge, ending with WS row.

**Dec row (RS):** K1, k2tog, work in patt to last 3 sts, ssk, k1 – 2 sts dec'd. Rep Dec row every 8 rows, 4 (4, 6, 6, 8, 8) more times, then rep Dec row every 6 rows, 6 (6, 4, 4, 2, 2) times – 81 (93, 99, 111, 117, 129) sts rem. Work even in patt until piece meas 16 (16, 16½, 16½, 17, 17)" from cast-on edge, ending with WS row.

### Raglan Shaping

Bind off 5 (6, 6, 7, 7, 8) sts at beg of next 2 rows – 71 (81, 87, 97, 103, 113) sts rem. Work 2 rows even in patt.

**Dec row (RS):** K1, ssk, work in patt to last 3 sts, k2tog, k1 – 2 sts dec'd. Rep Dec row every other RS row, 3 (2, 1, 1, 0, 0) more time(s), then rep Dec row every RS row, 15 (17, 20, 19, 22, 19) times – 33 (41, 43, 55, 57, 73) sts rem.

**Next row (RS):** Rep Dec row – 2 sts dec'd.

**Next row (WS):** P1, p2tog, work in patt to last 3 sts, ssp, p1 – 2 sts dec'd. Cont to work a Dec row every row, - (4, 4, 10, 10, 18) more times. Bind off rem 29 (29, 31, 31, 33, 33) sts.

### FRONT

Work as for Back.

### SLEEVES

With CC2 and Size 6 dpns, cast on 43 (43, 43, 47, 47, 47) sts. Divide evenly among dpns and join to work in the rnd.

### Cuff

With CC3, [purl 1 rnd, knit 1 rnd] 4 times.

### Main Sleeve

Switch to Size 8 dpns. Work Rnds 1-4 of Stranded Chart.

**Inc rnd:** K1, m1, work Rnd 5 of Stranded Chart to last st, m1, k1 – 2 sts inc'd. Cont to follow chart, work an Inc rnd every 8 (6, 4, 4, 4, 4) rnds, 6 (9,

*Knit. Relax. Smile. Repeat!*

2020 © Universal Yarn, Inc.

All rights reserved.

This pattern may not be reproduced for business, trade or sale.

2, 2, 7, 16) more times, then rep Inc rnd every 10 (8, 6, 6, 6, 6) rnds, 2 (2, 11, 11, 8, 2) times –61 (67, 71, 75, 79, 85) sts. Work even in patt until piece meas 18 (18, 18¼, 18¼, 18½, 18½)” from cast-on edge.

### Raglan Shaping

*Note: Work will be done back and forth in rows now. Work onto circ ndl.*

**Row 1 (RS):** Work in patt to last 5 (6, 6, 7, 7, 8) sts of rnd, bind off next 10 (12, 12, 14, 14, 16) sts, work in patt to end of row, turn – 51 (55, 59, 61, 65, 69) sts rem. Work a WS row even.

**Dec row (RS):** K1, ssk, work in patt to last 3 sts, k2tog, k1 – 2 sts dec'd. Rep Dec row every other RS row, 3 (3, 3, 4, 3, 4) more times, then rep Dec row every RS row, 10 (12, 12, 10, 13, 10) times – 23 (23, 27, 31, 31, 39) sts rem.

**Next row (RS):** Rep Dec row – 2 sts dec'd.

**Next row (WS):** P1, p2tog, work in patt to last 3 sts, ssp, p1 – 2 sts dec'd. Cont to work a Dec row every row, 2 (2, 4, 6, 6, 10) more times. Bind off rem 15 sts.

### COWL NECK

With Size 8 circ ndl and CC1, cast on 92 (92, 96, 96, 100, 100) sts. PM and join to work in the rnd.

*Note: There will not always be a full rep of Stranded Chart.*

Work Rnds 1-24 of Stranded Chart, 1 time.

Work Rnds 1-7 of Stranded Chart, 1 more time.

Rep Rnds 19-24 of Stranded Chart, 3 times.

### Cowl Edging

Switch to Size 6 circ ndl. With CC3, [purl 1 rnd, knit 1 rnd], 3 times, purl 1 rnd. With CC2, bind off all sts kwise.

### FINISHING

Block pieces to finished measurements. Sew raglan seams. Sew underarm and side seams.

Sew cast-on edge of Cowl Neck to neck opening. Weave in ends.

### Abbreviations

<b>approx</b>	approximately
<b>bef</b>	before
<b>beg</b>	begin(ning)
<b>CC</b>	contrast color
<b>circ</b>	circular
<b>cont</b>	continue
<b>dec('d)</b>	decrease(d)
<b>dpn(s)</b>	double pointed needle(s)
<b>est'd</b>	established
<b>inc('d)</b>	increase(d)
<b>k</b>	knit
<b>k2tog</b>	knit 2 stitches together (1 st dec'd)
<b>meas</b>	measures
<b>ndl</b>	needle
<b>p</b>	purl
<b>p2tog</b>	purl 2 sts together (1 st dec'd)
<b>patt</b>	pattern
<b>pm</b>	place marker
<b>rem</b>	remain(ing)
<b>rep</b>	repeat
<b>rnd</b>	round
<b>RS</b>	right side
<b>ssk</b>	slip next 2 sts individually knitwise, slip them back to left needle in this position, knit them together through the back loops (1 st dec'd)
<b>ssp</b>	slip next 2 sts individually knitwise, slip them back to left needle in this position, purl them together through the back loops (1 st dec'd)
<b>St st</b>	Stockinette stitch (knit on RS rows, purl on WS rows; in the rnd, knit every rnd)
<b>st(s)</b>	stitch(es)
<b>tog</b>	together
<b>WS</b>	wrong side
<b>yo</b>	yarn over

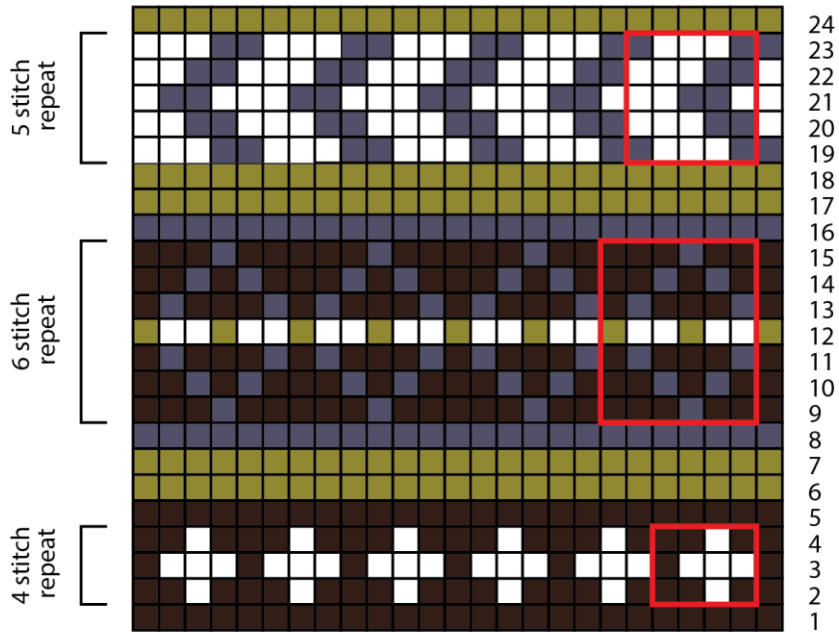
*Knit. Relax. Smile. Repeat!*

2020 © Universal Yarn, Inc.

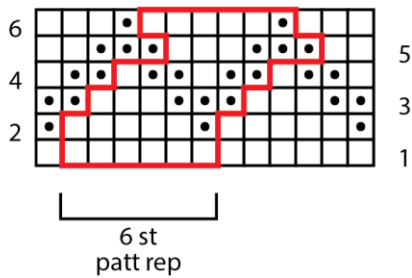
All rights reserved.

This pattern may not be reproduced for business, trade or sale.

## Stranded Chart



## Textured Chevrons



## Key

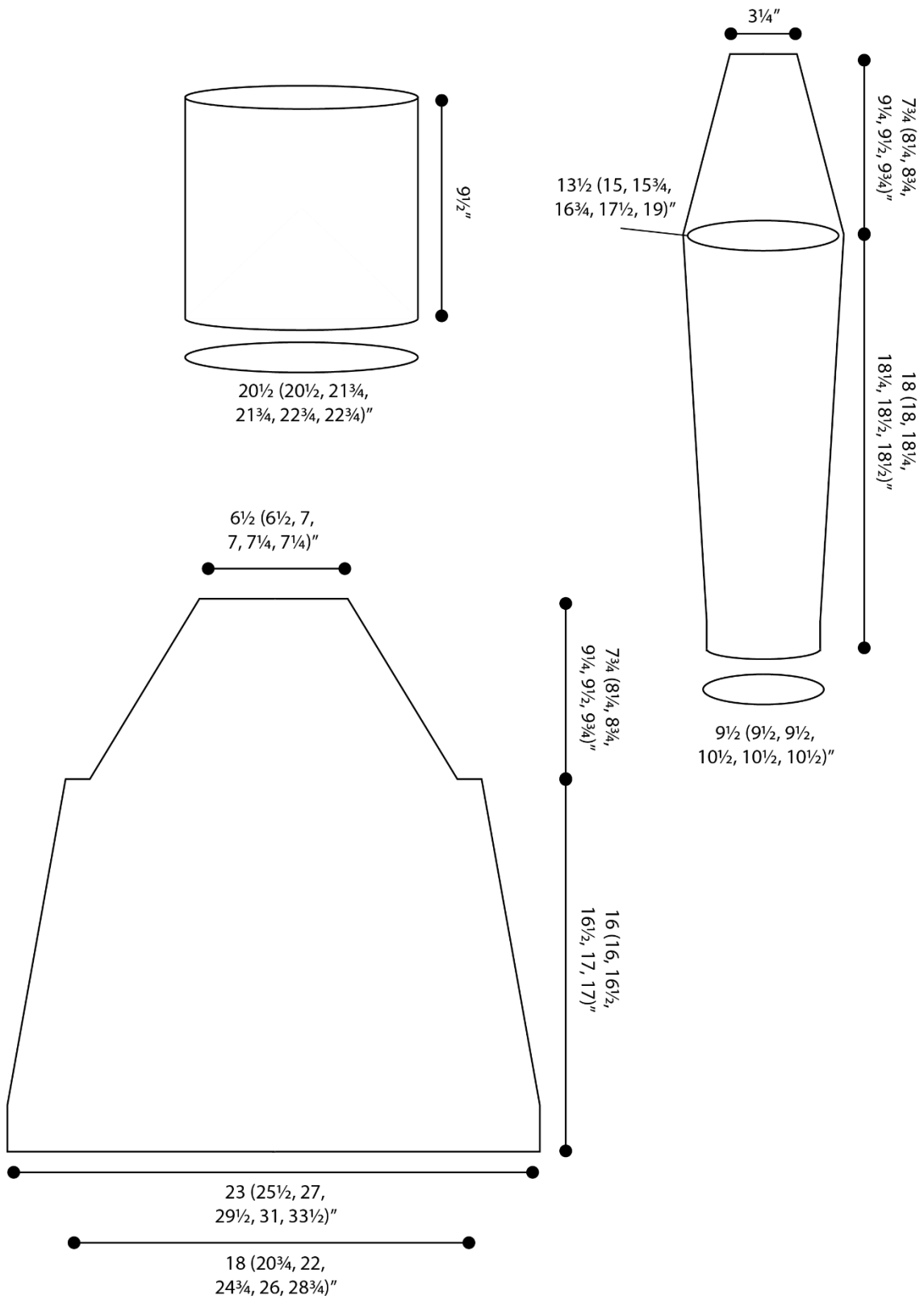
- knit on RS, purl on WS
- purl on RS, knit on WS
- MC
- CC1
- CC2
- CC3
- patt rep

*Knit. Relax. Smile. Repeat!*

2020 © Universal Yarn, Inc.

All rights reserved.

This pattern may not be reproduced for business, trade or sale.



*Knit. Relax. Smile. Repeat!*

2020 © Universal Yarn, Inc.

All rights reserved.

This pattern may not be reproduced for business, trade or sale.