



## Pattern Collection: Accessory



### **Bouquet Scarf**

Designed by Universal Yarn Design Team

### **DIFFICULTY**

Intermediate

### **SIZES**

One Size

### **FINISHED MEASUREMENTS**

**Width:** 14"

**Length:** 71"

### **MATERIALS**

**Universal Yarn *Deluxe Worsted Superwash*** (100% wool, 100g/218 yds)

- 757 Coral Heather – 4 balls

**Needle:** US Size 8 (5 mm) straight *or size needed to obtain gauge*

**Notions:** Tapestry needle, stitch markers, cable needle (cn)

### **GAUGE**

20 sts x 24 rows = 4" in Lace patt

**Save time, check your gauge.**

*Knit. Relax. Smile. Repeat!*

2021 © Universal Yarn, Inc.

All rights reserved.

This pattern may not be reproduced for business, trade or sale.

## PATTERN NOTES

The combination of a romantic lace motif and Deluxe Worsted Superwash creates a woolly love affair in the Bouquet Scarf. The attractive stitch pattern is engaging and perfect for the knitter looking to amplify their skillset. The scarf is trimmed with tidy ribbing on each end that flows into the lace pattern. Each side features a ribbed border, too.

This scarf is knit flat from the bottom up. We recommend placing markers between each pattern repeat to help you stay on track.

## STITCH GUIDE

**1x3 Left Cross (LC):** Slip 1 st to cn and hold in front, k3 from left needle, k1 from cn.

**1x3 Right Cross (RC):** Slip 3 sts to cn and hold in back, k1 from left needle, k3 from cn.

## Lace

*(multiple of 14 sts, plus 1)*

**Row 1 (RS):** P1, \* 1x3 LC, p1, yo, S2KP2, yo, p1, 1x3 RC, p1; rep from \* to end.

**Row 2 (WS):** \* K1, p4, k1, p3, k1, p4; rep from \* to last st, k1.

**Row 3:** P1, \* k4, p1, yo, S2KP2, yo, p1, k4, p1; rep from \* to end.

**Row 4:** Rep Row 2.

**Rows 5-6:** Rep Rows 3-4.

**Row 7:** P1, \* yo, ssk, k2, p1, yo, S2KP2, yo, p1, k2, k2tog, yo, p1; rep from \* to end.

**Row 8:** Rep Row 2.

**Row 9:** P1, \* k1, yo, ssk, k1, p1, yo, S2KP2, yo, p1, k1, k2tog, yo, k1, p1; rep from \* to end.

**Row 10:** Rep Row 2.

**Row 11:** P1, \* k2, yo, ssk, p1, yo, S2KP2, yo, p1, k2tog, yo, k2, p1; rep from \* to end.

**Row 12:** Rep Row 2.

**Row 13:** K2tog, yo, p1, \* 1x3 RC, p1, 1x3 LC, p1, yo, S2KP2, yo, p1; rep from \* to last 12 sts, 1x3 RC, p1, 1x3 LC, p1, yo, ssk.

**Row 14:** P2, [k1, p4] 2 times, \* k1, p3, [k1, p4] 2 times; rep from \* to last 3 sts, k1, p2.

**Row 15:** K2tog, yo, p1, \* [k4, p1] 2 times, yo, S2KP2, yo, p1; rep from \* to last 12 sts, [k4, p1] 2 times, yo, ssk.

**Row 16:** Rep Row 14.

**Rows 17-18:** Rep Rows 15-16.

**Row 19:** K2tog, yo, p1, \* k2, k2tog, yo, p1, yo, ssk, k2, p1, yo, S2KP2, yo, p1; rep from \* to last 12 sts, k2, k2tog, yo, p1, yo, ssk, k2, p1, yo, ssk.

**Row 20:** Rep Row 14.

**Row 21:** K2tog, yo, p1, \* k1, k2tog, yo, k1, p1, k1, yo, ssk, k1, p1, yo, S2KP2, yo, p1; rep from \* to last 12 sts, k1, k2tog, yo, k1, p1, k1, yo, ssk, k1, p1, yo, ssk.

**Row 22:** Rep Row 14.

**Row 23:** K2tog, yo, p1, \* k2tog, yo, k2, p1, k2, yo, ssk, p1, yo, S2KP2, yo, p1; rep from \* to last 12 sts, k2tog, yo, k2, p1, k2, yo, ssk, p1, yo, ssk.

**Row 24:** Rep Row 14.

Rep Rows 1-24 for patt.

## SCARF

### Lower Border

*Note: This section is also charted for your convenience.*

Cast on 69 sts.

**Row 1 (RS):** [P1, k1] 3 times, pm, p1, \* k1, p2, k1, p1, k3, p1, k1, p2, k1, p1; rep from \* to last 6 sts, pm, [k1, p1] 3 times.

**Row 2 (WS):** [K1, p1] 3 times, sl m, \* k1, p1, k2, p1, k1, p3, k1, p1, k2, p1; rep from \* to 1 st bef m, k1, sl m, [p1, k1] 3 times.

Rep Rows 1-2 until piece meas 3½" from cast-on edge, ending with a WS row.

### Lace Section

*Note: You may wish to place markers between each Lace pattern repeat to help you stay on track.*

**Row 1 (RS):** [P1, k1] 3 times, sl m, work Row 1 of Lace patt to m, sl m, [k1, p1] 3 times. Lace patt will be repeated 4 times across each row.

**Row 2 (WS):** [K1, p1] 3 times, sl m, work Row 2 of Lace patt to m, sl m, [p1, k1] 3 times.

Cont in patt as est'd through Row 24 of Lace patt, then rep Rows 1-24 of patt, 15 more times. Piece meas approx. 67½" from cast-on edge.

*Knit. Relax. Smile. Repeat!*

2021 © Universal Yarn, Inc.

All rights reserved.

This pattern may not be reproduced for business, trade or sale.



### Upper Border

*Note: This section is also charted for your convenience.*

**Row 1 (RS):** [P1, k1] 3 times, pm, p1, \* k1, p2, k1, p1, k3, p1, k1, p2, k1, p1; rep from \* to last 6 sts, pm, [k1, p1] 3 times.

**Row 2 (WS):** [K1, p1] 3 times, sl m, \* k1, p1, k2, p1, k1, p3, k1, p1, k2, p1; rep from \* to 1 st bef m, k1, sl m, [p1, k1] 3 times.

Rep Rows 1-2 until piece meas 3½" end of Lace patt, ending with a WS row. Piece meas approx. 71" from cast-on edge. Bind off all sts in patt.

### FINISHING

Weave in ends but do not trim. Wet or steam block, stretching to enhance lace. Once piece is fully dry, trim ends close to work.

### Abbreviations

<b>approx</b>	approximately
<b>bef</b>	before
<b>cn</b>	cable needle
<b>cont</b>	continue
<b>est'd</b>	established
<b>k</b>	knit
<b>k2tog</b>	knit 2 stitches together (1 st dec'd)
<b>LC</b>	left cross
<b>m</b>	marker
<b>meas</b>	measures
<b>ndl</b>	needle
<b>p</b>	purl
<b>patt</b>	pattern
<b>pm</b>	place marker
<b>rep</b>	repeat
<b>RS</b>	right side
<b>S2KP2</b>	slip 2 stitches as if to knit 2 together, knit 1, pass 2 slipped stitches over knit stitch; centered double decreases
<b>sl</b>	slip
<b>ssk</b>	slip next 2 sts individually knitwise, slip them back to left needle in this position, knit them together through the back loops (1 st dec'd)
<b>st(s)</b>	stitch(es)
<b>WS</b>	wrong side
<b>yo</b>	yarn over

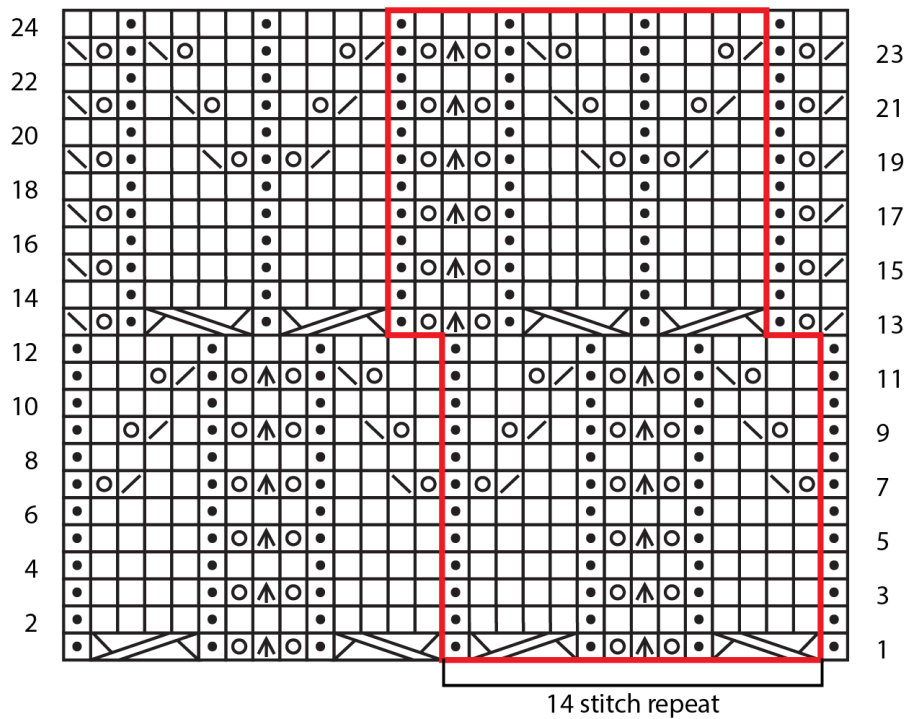
*Knit. Relax. Smile. Repeat!*

2021 © Universal Yarn, Inc.

All rights reserved.

This pattern may not be reproduced for business, trade or sale.

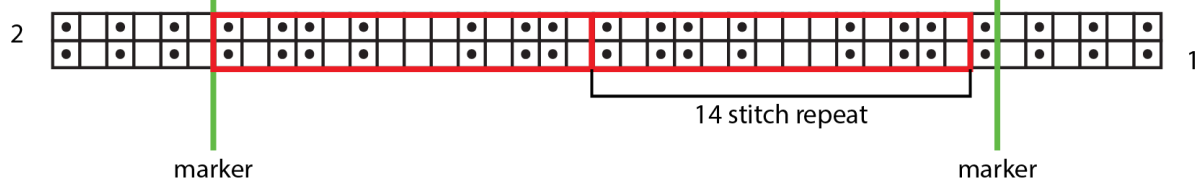
## Lace



## Key

- indicates marker
- pattern repeat
- purl on RS, knit on WS
- knit on RS, purl on WS
- yo
- S2KP2
- ssk
- k2tog
- 1x3 LC
- 1x3 RC

## Lower & Upper Border



*Knit. Relax. Smile. Repeat!*

2021 © Universal Yarn, Inc.

All rights reserved.

This pattern may not be reproduced for business, trade or sale.