



## Pattern Collection: Accessories



### Caitrin Hat

Designed by Tory Gurbisz

#### SIZES

Adult Small (Medium, Large)

*Shown in Small size.*

#### FINISHED MEASUREMENTS

**Circumference:** 17 $\frac{3}{4}$  (20 $\frac{1}{4}$ , 22 $\frac{3}{4}$ )"

**Height:** 10 $\frac{1}{4}$ " (excluding pom-pom)

#### MATERIALS

**Universal Yarn *Deluxe Worsted Tweed Superwash*** (90% superwash wool, 7% acrylic, 3% viscose; 218 yards, 100g)

- 910 Porcelain (MC) - 1 skein, all sizes
- 906 Agean (CC) - 1 skein, all sizes

**Needles:** US Size 7 (4.5 mm) 16" circular and set of dpns *or size needed to obtain gauge*

US Size 6 (4 mm) 16" circular

**Notions:** Tapestry needle, stitch markers, 3 $\frac{3}{8}$ " pom-pom maker

#### GAUGE

19 sts x 24 rows = 4" in Chevron patt with larger ndl

**Save time, check your gauge.**

*Knit. Relax. Smile. Repeat!*

2020 © Universal Yarn, Inc.

All rights reserved.

This pattern may not be reproduced for business, trade or sale.

## PATTERN NOTES

This hat is worked in the round from the bottom up. The Chevron pattern is created using stranded knitting.

## STITCH GUIDE

### K1, P1 Ribbing

(even number of sts)

**Rnd 1:** \* K1, p1; rep from \* to end.

Rep Rnd 1 for patt.

## HAT

With MC and smaller ndl, cast on 84 (96, 108) sts. PM and join to work in the rnd, being careful not to twist.

Work in K1, P1 Ribbing until piece meas approx. 1½" from cast-on edge.

Switch to larger circ ndl.

### Hat Body

*Note: This section is charted for your convenience.*

Work Rnds 1-6 of Chevron patt, 5 times.

### Crown Shaping

*Note 1: This section is charted for your convenience.*

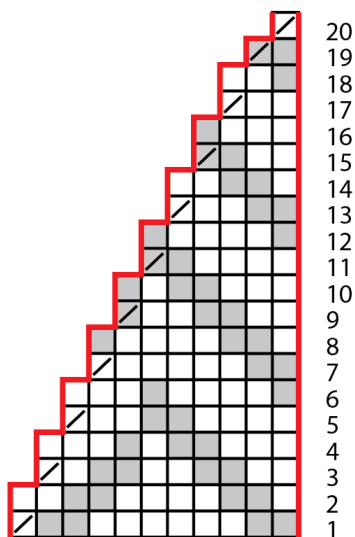
*Note 2: Change to dpns when there are too few stitches to fit comfortably on circular needle.*

Work Rnds 1-20 of Crown Shaping Chart – 7 (8, 9) sts rem. Break yarn leaving a 6" tail, pass through rem live sts, pull taut to close.

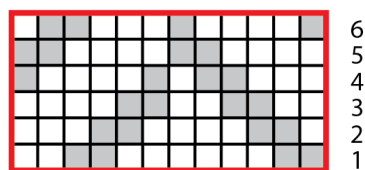
## FINISHING

Gently wash and block to finished measurements. Weave in ends. With CC, make pom-pom and attach it to the top of the hat.

Crown Shaping



Chevron Pattern



### Key

□ MC, knit

■ CC, knit

□ Patt rep

▤ K2tog

*Knit. Relax. Smile. Repeat!*

2020 © Universal Yarn, Inc.

All rights reserved.

This pattern may not be reproduced for business, trade or sale.

## Abbreviations

<b>approx</b>	approximately
<b>circ</b>	circular
<b>dpn(s)</b>	double pointed needle(s)
<b>est'd</b>	established
<b>k</b>	knit
<b>k2tog</b>	knit 2 stitches together (1 st dec'd)
<b>meas</b>	measures
<b>ndl</b>	needle
<b>p</b>	purl
<b>patt</b>	pattern
<b>pm</b>	place marker
<b>rem</b>	remain(ing)
<b>rep</b>	repeat
<b>rnd</b>	round
<b>st(s)</b>	stitch(es)

*Knit. Relax. Smile. Repeat!*

2020 © Universal Yarn, Inc.

All rights reserved.

This pattern may not be reproduced for business, trade or sale.