

## Conversions

### FINISHED MEASUREMENTS

Width: 24½"

Length: 63"

### MATERIALS

**Fibra Natura Whisper Lace** (70% superwash wool, 30% silk; 50g/440 yds)

- 103 Harbor – 3 balls

**Needles:** US Size 5 (3.75 mm) straight or size needed to obtain gauge

**Notions:** Tapestry needle, blocking wires, 26 ⅝" lightweight shell buttons

### GAUGE

19 sts x 26 rows = 4" in Section 2 patt

**Save time, check your gauge.**

### PATTERN NOTES

This convertible stole is worked from one end to the other. The eyelets on the sides and ends serve as buttonholes.

This piece can be worn at least 3 different ways: unbuttoned as a stole/scarf; with one end buttoned to a set of buttons for a poncho, or with both sets of buttons buttoned to the opposite sides and worn as a shrug.

### STOLE

Cast on 117 sts.

#### Section 1

**Row 1 (WS):** K2, p11, pm, [p8, pm] 12 times, p6, k2.

**Row 2 (RS):** K4, purl to last 4 sts, k4.

**Row 3:** K2, p2, k2, purl to last 6 sts, k2, p2, k2.

**Row 4:** K2, k2tog, yo, p2, k2, \* k2tog, yo, k2; rep from \* to last 9 sts, k2tog, yo, k1, p2, k2tog, yo, k2.

**Row 5:** K2, p2, k2, purl to last 6 sts, k2, p2, k2.

**Row 6:** K2, k2tog, yo, purl to last 4 sts, k2tog, yo, k2.

**Row 7:** K2, p2, k2, knit to last 6 sts, k2, p2, k2.

#### Section 2

**Row 1 (RS):** K2, k2tog, yo, p2, \* k2, k2tog, yo, k1, yo, ssk, k1; rep from \*

11 more times, k2, k2tog, yo, k1, yo, ssk, k2, p2, k2tog, yo, k2.

**WS Rows 2 - 28:** K2, p2, k2, purl to last 6 sts, k2, p2, k2.

**Row 3:** K2, k2tog, yo, p2, \* k1, k2tog, yo, k3, yo, ssk; rep from \* 11 more times, k1, k2tog, yo, k3, yo, ssk, k1, p2, k2tog, yo, k2.

**Row 5:** K2, k2tog, yo, p2, K2tog, yo, \* k5, yo, sl2-k1-p2sso, yo; rep from \* 11 more times, k5, yo, ssk, p2, k2tog, yo, k2.

**Row 7:** K2, k2tog, yo, p2, ssk, yo, \* k5, yo, sl2-k1-p2sso, yo; rep from \* 11 more times, k5, yo, k2tog, p2, k2tog, yo, k2.

**Row 9:** Rep Row 7.

**Row 11:** K2, k2tog, yo, p2, k2, yo, ssk, \* k1, k2tog, yo, k3, yo, ssk; rep from \* 11 more times, k1, k2tog, yo, k2, p2, k2tog, yo, k2.

**Row 13:** K2, k2tog, yo, p2, k3, yo, sl2-

k1-p2sso, yo, \* k5, yo, sl2-k1-p2sso, yo; rep from \* 11 more times, k3, p2, k2tog, yo, k2.

**Row 15:** K2, k2tog, yo, p2, k1, yo, ssk, \* k3, k2tog, yo, k1, yo, ssk; rep from \* 11 more times, k3, k2tog, yo, k1, p2, k2tog, yo, k2.

**Row 17:** K2, k2tog, yo, p2, k2, yo, ssk, \* k1, k2tog, yo, k3, yo, ssk; rep from \* 11 more times, k2, p2, k2tog, yo, k2.

**Row 19:** K2, k2tog, yo, p2, k3, yo, sl2-k1-p2sso, yo, \* k5, yo, sl2-k1-p2sso, yo; rep from \* 11 more times, k3, p2, k2tog, yo, k2.

**Row 21:** Rep Row 19.

**Row 23:** Rep Row 19.

**Row 25:** K2, k2tog, yo, p2, k1, k2tog, yo, \* k3, yo, ssk, k1, k2tog, yo; rep from \* 11 more times, k3, yo, ssk, k1, p2, k2tog, yo, k2.

**Row 27:** K2, k2tog, yo, p2, K2tog, yo, \* k5, yo, sl2-k1-p2sso, yo; rep from \*



# Conversions

(continued)

11 more times, k5, yo, ssk, p2, k2tog, yo, k2.

Rep Rows 1-28, 14 more times.

## Section 3

**Row 1 (RS):** K2, k2tog, yo, purl to last 4 sts, k2tog, yo, k2.

**Row 2 (WS):** K2, p2, k2, purl to last 6 sts, k2, p2, k2.

**Row 3:** K2, k2tog, yo, p2, k2, \* k2tog, yo, k2; rep from \* to last 9 sts, k2tog, yo, k1, p2, k2tog, yo, k2.

**Row 4:** K2, p2, k2, purl to last 6 sts, k2, p2, k2.

**Row 5:** K4, purl to last 4 sts, p4.

**Row 6:** K2, purl to last 2 sts, k2.

Bind off all sts pwise.

## FINISHING

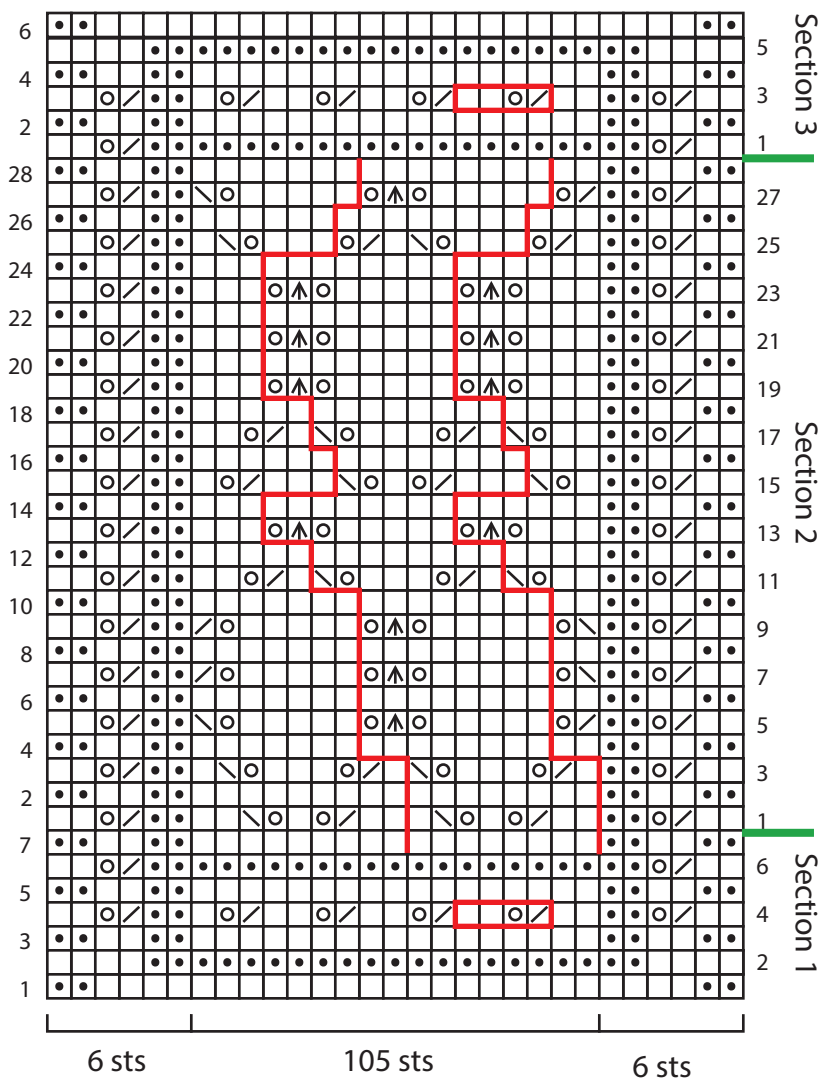
Weave in ends but do not trim.

Steam or wet block piece to finished measurements, running blocking wires through all sides. Allow to dry fully.

Sew buttons to the outermost garter stitch edge of piece. Working along one long edge of shawl, sew a button to Row 4 of Section 1. Sew 12 more buttons along this edge evenly spaced, every 14 rows/7 garter stitch ridges. Rep by sewing 13 more buttons on the same side of piece, but at the opposite end. Trim ends.

2

repeat 15 x's



## Key

- knit on RS, purl on WS
- purl on RS, knit on WS
- / k2tog
- \ ssk
- ▲ sl2-k1-p2sso
- pattern repeat



## Conversions (continued)

