



PATTERN COLLECTION

Children



Dandelion Set

Designed by Aubrey Busek

DIFFICULTY

Easy

SIZES

Sweater

6-12 mo (12-18 mo, 2-4 yrs, 4-6 yrs, 6-8 yrs)

Shown in 12-18 mo size.

Hat: Baby (Toddler, Child)

Shown in Baby size.

FINISHED MEASUREMENTS

Sweater: Chest: 19½ (21¼, 24¼, 25½, 28)

Length: 12¾ (13½, 14¼, 15, 15 ¾)"

Hat

Brim Circumference: 15½ (17¼, 18¾)"

stretches to approx 17 (19, 21)"

Length: 7½ (7½, 7¾)"

MATERIALS

Fibra Natura Cotton True Sport (100% pima cotton; 50 g/197 yds)

- 104 Lemon Ice -3 (3, 4, 4, 5) balls for set (*Size 12-18 mo refer to pattern notes.*)

Needle: Ndl A - US Size 4 (3.5 mm)

straight (or your preferred ndl for knitting flat) and set of DPNS (or your preferred ndl for knitting small circumferences in the rnd) *or size needed to obtain gauge*

Ndl B - US Size 3 (3.25 mm) straight (or your preferred ndl for knitting flat) and set of DPNS (or your preferred ndl for knitting small circumferences in the rnd)

Ndl C - US Size 2 (2.75 mm) DPNS (or your preferred ndl for knitting small circumferences in the rnd)

Knit, Relax, Smile, Repeat!

2021 © Universal Yarn, Inc.

All rights reserved. This pattern may not be reproduced for business, trade or sale.

Questions? Contact patterns@universalyarn.com

Notions: Tapestry needle, stitch markers, stitch holder or waste yarn

GAUGE

Sweater: 26 sts x 34 rows = 4" in Droplets patt with Ndl A

Hat: 28 sts x 36 rnds = 4" in Droplets patt with Ndl B

Save time, check your gauge.

PATTERN NOTES

This sweet, summery set will remind you of sunshine and daisies – or dandelions! Lightweight pima cotton ensures your little one is cool and comfortable in the heat of the summer, and the little hat will protect their heads from sunburn. It's perfect for spring, summer, and fall, especially when you add layers.

This sweater is knit in pieces from the bottom up and seamed. Stitches are picked up and worked in the round for the neck edging. The hat is knit in the round from the bottom up.

The 12-18 mo. size takes almost exactly 3 balls for the set. You may wish to purchase a 4th ball as insurance.

STITCH GUIDE

K1, P1 Rib

(even number of sts, knit in the rnd)

Rnd 1: * K1, p1; rep from * to end.

Rep Rnd 1 for patt.

K1, P1 Rib

(odd number of sts, knit flat)

Row 1 (RS): * K1, p1; rep from * last st, k1.

Row 2 (WS): * P1, k1; rep from * to last st, p1.

Rep Rows 1-2 for patt.

Droplets

(multiple of 4 sts, plus 3, knit flat)

Row 1 (RS): * P3, k1; rep from * to last 3 sts, p3.

Row 2 (WS): K3, * p1, k3; rep from * to end.

Row 3: * P1, k1, p2; rep from * to last 3 sts, p1, k1, p1.

Row 4: K1, p1, k1, * k2, p1, k1; rep from * to end.

Rep Rows 1-4 for patt.

Droplets

(multiple of 4 sts, knit in the round)

Rnd 1: * P3, k1; rep from * to end.

Rnd 2: Rep Rnd 1.

Rnd 3: P1, k1, p2; rep from * to end.

Rnd 4: Rep Rnd 3.

Rep Rnds 1-4 for patt.

SWEATER

FRONT

Hem

With Ndl B, cast on 65 (73, 81, 85, 93) sts.

Row 1 (RS): Work Row 1 of K1, P1 Rib to end.

Row 2 (WS): Work Row 2 of K1, P1 Rib to end.

Cont as est'd in K1, P1 Rib until piece meas 1¼" from cast-on edge, ending with a WS Row. Change to Ndl A.

Main Body

Row 1 (RS): K1, pm, work Row 1 of Droplets to last st, pm, k1.

Row 2 (WS): P1, sl m, work Row 2 of Droplets to m, sl m, p1.

Cont as est'd through Row 4, then rep rows 1-4 until piece meas approx 8 (8½, 9, 9½, 10)" from cast-on edge, ending with a WS Row.

Shape Armholes

Note: Maintain patt as est'd throughout Armhole Shaping.

Bind off 2 (2, 3, 3, 3) sts at the beg of the next 2 rows – 61 (69, 75, 79, 87) sts rem.

Cont as est'd in Droplets patt until piece meas 3 (3¼, 3½, 3¾, 4)" from underarm bind-off, ending with a WS Row.

Shape Front Neck

Note: Maintain patt as est'd throughout Neck Shaping.

Next Row (RS): Cont as est'd over 26 (29, 31, 31, 32) Left Front sts, bind off center 9 (11, 13, 17, 23) sts, cont as est'd over 26 (29, 31, 31, 32) Right Front sts to end. Place Left Front sts on holder or waste yarn.

Shape Right Front Neck

WS Rows 1-9: Cont as est'd to end.

Row 2 (RS): Bind off 3, cont as est'd to end – 23 (26, 28, 28, 29) sts rem.

RS Rows 4-8: Bind off 2, cont as est'd to end – 17 (20, 22, 22, 23) sts rem.

Row 10: Bind off 1, cont as est'd to end – 16 (19, 21, 21, 22) sts rem.

Neck Shaping is complete. Cont even as est'd in Droplets patt until piece meas 4¼ (5, 5¼, 5½, 5¾)"

Knit, Relax, Smile, Repeat!

2021 © Universal Yarn, Inc.

from underarm bind-off, ending with a WS Row. Place rem live sts on holder or waste yarn. Return Left Front sts to ndl.

Shape Left Front Neck

Row 1 (WS): Bind off 3, cont as est'd to end – 23 (26, 28, 28, 29) sts rem.

RS Rows 2-10: Cont as est'd to end.

WS Rows 3-7: Bind off 2, cont as est'd to end – 17 (20, 22, 22, 23) sts rem.

Rows 9: Bind off 1, cont as est'd to end – 16 (19, 21, 21, 22) sts rem.

Neck shaping is complete. Cont even as est'd in Droplets patt until piece meas $4\frac{3}{4}$ (5, $5\frac{1}{4}$, $5\frac{1}{2}$, $5\frac{3}{4}$)" from underarm bind-off, ending with a WS Row. Place rem live sts on holder or waste yarn.

BACK

Work as for Front to armhole markers.

Cont as est'd in Droplets patt until piece meas $3\frac{3}{4}$ (4, $4\frac{1}{4}$, $4\frac{1}{2}$, $4\frac{3}{4}$)" from armhole markers, ending with a WS Row.

Shape Back Neck

Note: Maintain Droplets patt as est'd throughout Neck Shaping.

Next Row (RS): Cont as est'd over 22 (25, 27, 27, 28) Right Back sts, bind off center 17 (19, 21, 25, 31) sts, cont as est'd over 22 (25, 27, 27, 28) Left Back sts to end. Place Right Back sts on holder or waste yarn.

Shape Left Back Neck

WS Rows 1-4: Cont as est'd to end.

Row 2 (RS): Bind off 3, cont as est'd to end – 19 (22, 24, 24, 25) sts rem.

Row 4: Bind off 2, cont as est'd to end – 17 (20, 22, 22, 23) sts rem.

Row 6: Bind off 1, cont as est'd to end – 16 (19, 21, 21, 22) sts rem.

Neck shaping is complete. Cont even as est'd in Droplets patt until piece meas $4\frac{3}{4}$ (5, $5\frac{1}{4}$, $5\frac{1}{2}$, $5\frac{3}{4}$)" from armhole markers, ending with a WS Row. Place rem live sts on holder or waste yarn. Return Right Back sts to ndl.

Shape Right Back Neck

Row 1 (WS): Bind off 3, cont as est'd to end – 19 (22, 24, 24, 25) sts rem.

RS Rows 2-6: Cont as est'd to end.

Rows 3: Bind off 2, cont as est'd to end – 17 (20, 22, 22, 23) sts rem.

Row 5: Bind off 1, cont as est'd to end – 16 (19, 21, 21, 22) sts rem.

Neck shaping is complete. Cont even as est'd, if necessary, in Droplets patt until piece meas $4\frac{3}{4}$ (5, $5\frac{1}{4}$, $5\frac{1}{2}$, $5\frac{3}{4}$)" from armhole markers, ending with a

WS Row. Place rem live sts on holder or waste yarn.

SLEEVES

Hem

With Ndl B, cast on 49 (49, 53, 53, 57) sts.

Row 1 (RS): Work Row 1 of K1, P1 Rib to end.

Row 2 (WS): Work Row 2 of K1, P1 Rib to end.

Cont as est'd in K1, P1 Rib until piece meas 1" from cast-on edge, ending with a WS row. Change to Ndl A.

Main Sleeve

Row 1 (RS): K1, pm, work Row 1 of Droplets patt to last st, pm, k1.

Row 2 (WS): P1, sl m, work Row 2 of Droplets patt to m, sl m, p1.

Cont as est'd through Row 4 of Droplets patt.

Shape Sleeve

Note: Maintain Droplets patt as est'd throughout Sleeve Shaping.

Inc Row (RS): K1, sl m, m1R, work next row if Droplets patt to m, m1L, sl m, k1 – 2 sts inc'd, 51 (51, 55, 55, 59) sts.

Rep Inc Row every 2 rows, 2 (4, 2, 6, 2) more times, then every 4 rows, 4 (3, 5, 3, 6) times – 12 (14, 14, 18, 16) sts inc'd, 63 (65, 69, 73, 75) sts.

Cont even in Droplets patt as est'd until piece meas $4\frac{1}{2}$ ($4\frac{1}{2}$, 5, 5, $5\frac{1}{2}$)" from cast-on edge, ending with a WS row. Bind off all sts.

FINISHING

With RS facing tog, join Left Front and Left Back shoulder sts using the three-needle bind-off. Rep for Right Front and Right Back sts.

Gently wash and block to finished to measurements. Weave in ends. Sew Sleeves to Body. Sew Sleeve seams and side seams.

Neck Edging

With Ndl B DPNs and beg at Right shoulder, pick up and knit 70 (74, 78, 86, 98) sts evenly around neck. PM and join to knit in the rnd. Work in K1, P1 Rib until piece meas $\frac{3}{4}$ " from picked-up edge. Bind off all sts in patt.

Knit, Relax, Smile, Repeat!

2021 © Universal Yarn, Inc.



HAT

Brim

With Ndl C DPNs, cast on 108 (120, 132) sts. PM and join to knit in the round, being careful not to twist.

Rnd 1: Work Rnd 1 of K1, P1 Rib to end.

Rep Rnd 1 until piece meas approx 1½" from cast-on edge. Change to Ndl B dpns.

Main Body

Rnd 1: Work Rnd 1 of Droplets patt to end.

Rnd 2: Work Rnd 2 of Droplets patt to end.

Cont as est'd through Rnd 4 of Droplets patt, then rep Rnds 1-4 until piece meas approx 5½" from cast-on edge.

Crown Shaping

Note: Maintain Droplets patt as est'd throughout Crown Shaping.

Set-up Rnd: * Cont as est'd in Droplets patt over 18 (20, 22) sts, pm; rep from * to end – 6 markers placed across rnd.

Dec Rnd: * Cont as est'd to 2 sts bef m, k2tog, sl m; rep from * to end – 6 sts dec'd, 102 (114, 126) sts rem.

Rep Dec Rnd 15 (17, 19) more times – 90 (102, 114) sts dec'd, 12 sts rem.

Break yarn leaving approx. 8" tail. Thread tail through rem live sts. Pull taut to close.

FINISHING

Gently wash and block to finished measurements. Weave in ends.

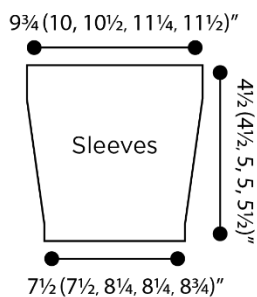
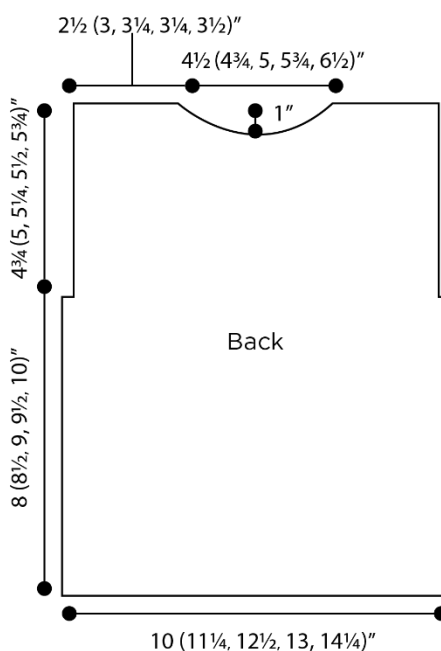
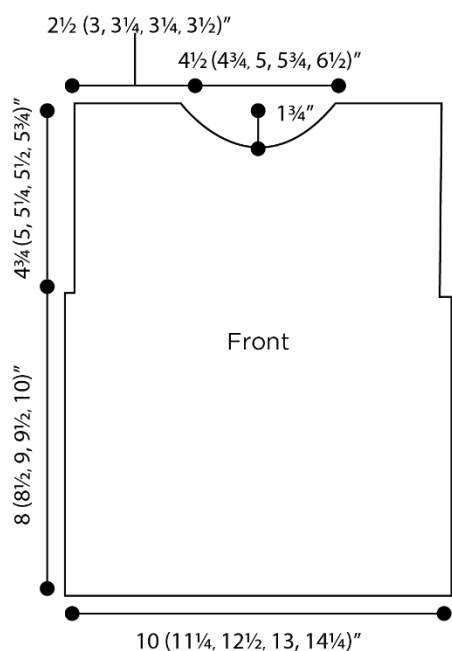
Abbreviations

approx	approximately
cont	continue
dec('d)	decrease(d)
dpn(s)	double pointed needle(s)
est'd	established
inc('d)	increase(d)
k	knit
k2tog	knit 2 stitches together (1 st dec'd)
m	marker
m1L	insert left needle from front to back under horizontal strand of yarn lying between st just worked and next st, knit or purl this st through the back loop (1 st inc'd)
m1R	insert left needle from back to front under horizontal strand of yarn lying between st just worked and next st, knit or purl this st through the front loop (1 st inc'd)
ndl	needle
p	purl
patt	pattern
pm	place marker
rem	remain(ing)
rep	repeat
rnd	round
st(s)	stitch(es)
tog	together
WS	wrong side

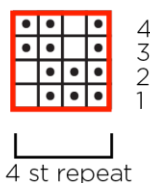
Knit, Relax, Smile, Repeat!

2021 © Universal Yarn, Inc.

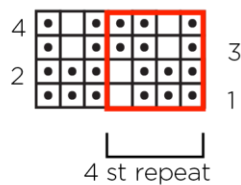
All rights reserved. This pattern may not be reproduced for business, trade or sale.
Questions? Contact patterns@universalyarn.com



Droplets knit in the round



Droplets knit flat



Key

- pattern repeat
- knit on RS, purl on WS
- purl on RS, knit on WS

Knit, Relax, Smile, Repeat!

2021 © Universal Yarn, Inc.

All rights reserved. This pattern may not be reproduced for business, trade or sale.
Questions? Contact patterns@universalyarn.com