



PATTERN COLLECTION

Accessories



West Wind Hat

Designed by Rachel Brockman

DIFFICULTY

Intermediate

SIZES

Teen (Adult Small, Medium, Large)

Shown in Adult Small Size

FINISHED MEASUREMENTS

Circumference: 17 (19¼, 21¼, 23½)"

Length: 8¾ (9¼, 9¾, 9¾)"

MATERIALS

[Universal Yarn Uni Merino Mini](#) (75% superwash merino wool, 25% nylon; 25g/109 yds)

- 148 Koala (A) - 2 skeins
- 129 Cascade (B) - 1 skein
- 115 Duckling (C) - 1 skein
- 111 Oriole (D) - 1 skein
- 119 Pickle (E) - 1 skein

Needle: US Size 3 (3.25 mm) set of 16" circular and set of DPNs (or your preferred needle for knitting small circumferences) *or size needed to obtain gauge*

US Size 2 (2.75 mm) 16" circular

Notions: Tapestry needle, stitch markers

GAUGE

30 sts x 33 rnds = 4" in stranded knitting with larger ndl

Save time, check your gauge.

Knit, Relax, Smile, Repeat!

2022 © Universal Yarn, Inc.

All rights reserved. This pattern may not be reproduced for business, trade or sale.

PATTERN NOTES

Lightweight, cozy, and colorful, the West Wind Hat is perfect for breezy days. Knit in Uni Merino Mini, this hat has endless options for color combinations. This hat features a 2x2 ribbed brim which is long enough to either fold or wear slouchy. The choice is yours!

This hat is knit seamlessly in the round from the bottom up. The Hat Body pattern is worked using stranded knitting and is charted only.

STITCH GUIDE

K2, P2 Rib

(multiple of 4 sts)

Rnd 1: * K2, p2; rep from * to end.

Rep Rnd 1 for patt.

PATTERN BEGINS

HAT

Brim

With smaller ndl and color A, cast on 128 (144, 160, 176) sts. PM and join to knit in the rnd, being careful not to twist. Work in K2, p2 Rib until piece meas 2 (2½, 2½, 3)" from cast-on edge. Change to larger circ ndl. Do not break color A.

Hat Body

Note 1: Change colors as indicated in Hat Body patt. Pattern will be repeated 8 (9, 10, 11) times across each round. You may wish to place markers between each pattern repeat to help you stay on track.

Note 2: When there are too few stitches to fit comfortably on 16" circular needle, change to your preferred method for knitting small circumferences.

Rnd 1: Work Rnd 1 of Hat Body patt to end.

Cont in patt as est'd through Rnd 56 of patt. The Crown Shaping begins on Rnd 47. After all decreases are completed, 16 (18, 20, 22) sts rem on ndl.

Next Rnd: * K2tog; rep from * to end – 8 (9, 10, 11) sts rem.

Break yarn leaving approx. 8" tail. Thread tail through rem live sts and pull taut to close.

FINISHING

Gently wash and block to finished measurements. Weave in ends.

Abbreviations

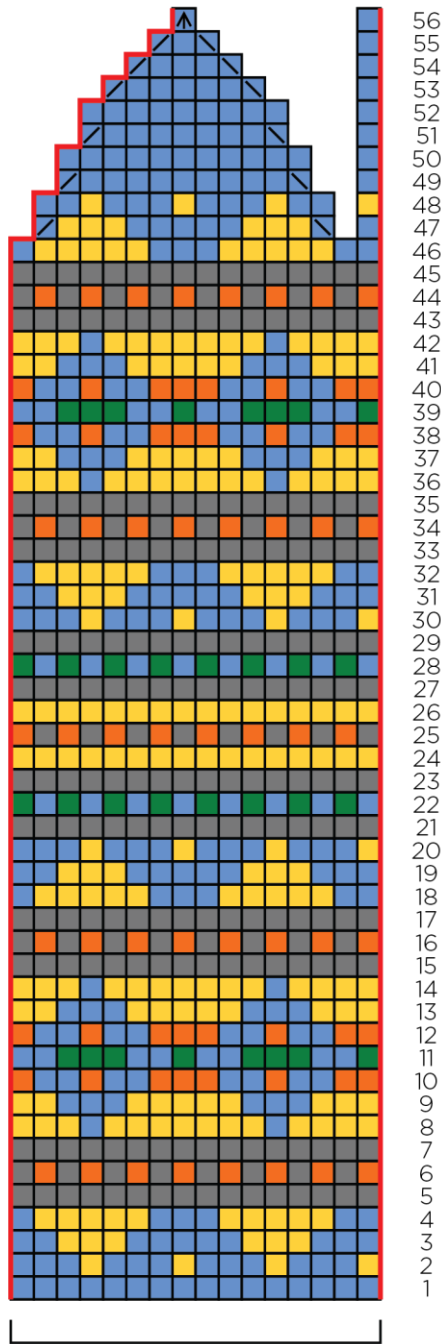
approx	approximately
bor	beginning of round
circ	circular
cont	continue
dec('d)	decrease(d)
dpn(s)	double pointed needle(s)
est'd	established
k	knit
k2tog	knit 2 stitches together (1 st dec'd)
ndl	needle
p	purl
patt	pattern
pm	place marker
rem	remain(ing)
rep	repeat
rnd	round
S2KP2	slip 2 stitches as if to knit 2 together, knit 1, pass 2 slipped stitches over knit stitch; centered double decreases
ssk	slip next 2 sts individually knitwise, slip them back to left needle in this position, knit them together through the back loops (1 st dec'd)
st(s)	stitch(es)

Knit, Relax, Smile, Repeat!

2022 © Universal Yarn, Inc.

All rights reserved. This pattern may not be reproduced for business, trade or sale.

Hat Body



56
55
54
53
52
51
50
49
48
47
46
45
44
43
42
41
40
39
38
37
36
35
34
33
32
31
30
29
28
27
26
25
24
23
22
21
20
19
18
17
16
15
14
13
12
11
10
9
8
7
6
5
4
3
2
1

- Key
- pattern repeat
 - with color A, knit
 - with color B, knit
 - with color C, knit
 - with color D, knit
 - with color E, knit
 - with color B, k2tog
 - with color B, ssk
 - with color B, S2KP2

16 stitch repeat
repeat 8 (9, 10, 11) total times

Knit, Relax, Smile, Repeat!
2022 © Universal Yarn, Inc.

All rights reserved. This pattern may not be reproduced for business, trade or sale.