



## PATTERN COLLECTION: *WOMEN*



### **In Flight Pullover**

Designed by Universal Yarn Design Team

### **SIZES**

Small (Medium, Large, 1X)

Shown in Small Size

### **FINISHED MEASUREMENTS**

**Bust:** 34½ (40, 45½, 51¼)"

**Length:** 21½ (22¾, 23½, 24½)"

**Yoke Depth:** 7½ (8¼, 9, 9½)"

**Upper Arm:** 13 (14¼, 15½, 17)"

### **MATERIALS**

**Universal Yarn *Deluxe DK Superwash***  
(100% superwash wool; 100g/284 yds)

- 806 Marigold – 4 (5, 5, 6) balls

**Needles:** US Size 6 (4 mm) 24" & 16" circular, set of dpns *or size needed to obtain gauge*

US Size 4 (3.5 mm) 24" & 16" circular, set of dpns

**Notions:** Tapestry needle, stitch markers, stitch holders

### **GAUGE**

20 sts x 26 rows = 4" in In Flight Lace patt

**Save time, check your gauge**

## PATTERN NOTES

This pullover is worked from the bottom up. Sleeves are worked and placed on holders. The Body is worked upward in one piece. Body and Sleeves are joined at the yoke and then worked together for raglan shaping.

Longer circular needles are used for the body and yoke. When there are too few sts to fit on the longer needle in the yoke, switch to the shorter circular.

## STITCH GUIDE

### In Flight Lace

*(multiple of 14 sts + 1)*

**Rnd 1:** \* K1, yo, k4, ssk, k1, k2tog, k4, yo; rep from \*, end k1.

**Rnd 2:** \* K2, yo, k3, ssk, k1, k2tog, k3, yo, k1; rep from \*, end k1.

**Rnd 3:** \* K3, yo, k2, ssk, k1, k2tog, k2, yo, k2; rep from \*, end k1.

**Rnd 4:** \* K4, yo, k1, ssk, k1, k2tog, k1, yo, k3; rep from \*, end k1.

**Rnd 5:** \* K5, yo, ssk, k1, k2tog, yo, k4; rep from \*, end k1.

**Rnd 6:** \* K1, k2tog, k4, yo, k1, yo, k4, ssk; rep from \*, end k1.

**Rnd 7:** \* K1, k2tog, k3, yo, k3, yo, k3, ssk; rep from \*, end k1.

**Rnd 8:** \* K1, k2tog, k2, yo, k5, yo, k2, ssk; rep from \*, end k1.

**Rnd 9:** \* K1, k2tog, k1, yo, k7, yo, k1, ssk; rep from \*, end k1.

**Rnd 10:** K1, k2tog, yo, k9, yo, ssk; rep from \*, end k1.

Rep Rnds 1-10 for patt.

## SLEEVES

With smaller dpns, cast on 43 (45, 47, 49) sts. Distribute sts evenly among ndls being careful not to twist. PM and join to work in the rnd.

### Cuff

Purl 1 rnd. Knit 1 rnd. Repeat these 2 rnds until Cuff meas 1½", ending with a purl rnd.

## Main Sleeve

Switch to larger ndls. Knit 2 rnds.

**Inc rnd:** K1, m1, knit to last st, m1, k1 – 2 sts inc'd. Working in St st, repeat Inc rnd every 9 (8, 7, 6) rnds, 10 (12, 14, 17) more times – 65 (71, 77, 85) sts. Continue in St st until Sleeve meas 18 (18¼, 18½, 18¾)" from cast-on edge.

**Next rnd:** Knit to last 3 (5, 7, 10) sts, bind off next 6 (10, 14, 20) sts. Place rem 59 (61, 63, 65) Sleeve sts on holder.

## BODY

With smaller circ ndl, cast on 172 (200, 228, 256) sts.

### Hem

Purl 1 rnd. Knit 1 rnd. Repeat these 2 rnds until Hem meas 1½", ending with a purl rnd.

### Establish Pattern

Switch to larger ndl.

**Set-up rnd:** K85 (99, 113, 127), pm, p1, pm, k85 (99, 113, 127), pm, p1.

**Rnd 1:** \* Work Row 1 of In Flight Lace to m, p1; rep from \* once more. Patt will be repeated 6 (7, 8, 9) times across each front/back section.

**Rnd 2:** \* Work next row of In Flight Lace to m, p1; rep from \* once more. Cont in patt as est'd until Body meas 14 (14½, 14¾, 15)" , ending with Row 5 or 10 of patt.

Knit 1 rnd.

**Next rnd:** Knit to last 4 (6, 8, 11) sts, bind off next 7 (11, 15, 21) sts, knit to 4 (6, 8, 11) sts bef next m, bind off next 7 (11, 15, 21) sts, knit to end – 79 (89, 99, 107) sts rem each front/back.

## Yoke, Raglan Shaping

**Joining rnd:** P1 st from first Sleeve, knit to last st of Sleeve, p1, pm, p1 from Body, k77 (87, 97, 105), p1, pm, p1 st from second Sleeve, knit to last st of Sleeve, p1, pm, p1 from Body, knit to last st, p1, pm for beg of rnd – 276 (300, 324, 344) sts, 4 raglan markers.

**Dec rnd:** \* P1, k1, k2tog, knit to 4 sts bef m, ssk, k1, p1; rep from \* 3 more times – 8 sts dec'd.

**Next rnd:** \* P1, knit to 1 st bef m, p1; rep from \* 3 more times.

Rep last 2 rnds, 23 (26, 28, 30) more times – 84  
 (84, 92, 96) sts rem; 11 (7, 5, 3) sts per Sleeve, 31  
 (35, 41, 45) sts per Front/Back.

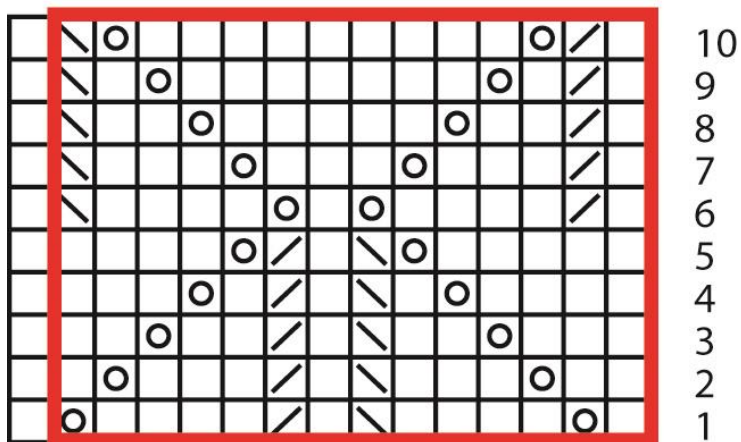
### Neck Edging

Switch to smaller ndls. Purl 1 rnd. Knit 1 rnd. Rep  
 these 2 nds, 2 more times. Bind off all sts, pwise.

### FINISHING

Sew underarm seams. Weave in ends and block.

## In Flight Lace



### Key

- ☐ knit
- ☒ yo
- ☒ ssk
- ☒ k2tog
- ☒ patt rep

