



PATTERN COLLECTION

Accessories



Mirror Image Cowl: Crochet

Designed by Ashley Jane McIntyre

DIFFICULTY

Intermediate

SIZES

One Size

FINISHED MEASUREMENTS

Circumference: 30"

Height: 8½"

MATERIALS

[Universal Yarn Minou](#) (52% nylon, 40% baby alpaca, 8% merino wool; 50g/158 yds)

- 101 Borzoi (B) - 1 ball
- 108 Tanager (A) - 1 ball

Hook: US Size H/8 (5 mm)

Notions: Tapestry needle, removable stitch markers

GAUGE

12 sts x 8 rnds = 4" in Double Crochet

Save time, check your gauge.

PATTERN NOTES

Fuzzy, colorful fun begins with our Minou yarn. Spun in Italy, this luxurious blend of baby alpaca, merino wool, and nylon will make you fall in love with eyelash yarns. The rich texture of the yarn is paired perfectly with its soft feel and surprising warmth. The Mirror Image Cowl makes the most of 2 balls of Minou, with a colorwork Diamond pattern that pops. Best part? We have a knit and crochet version of this pattern, so choose a hook or needles and get started! Bonus points if you and your crafty bestie make matching cowls.

This cowl is crocheted in joined, unturned rounds from the bottom up. You will use stranded colorwork to make the diamond pattern following a color chart.

STITCH GUIDE

Foundational Double Crochet (Fdc)

To start: ch 3, yo, insert hk into 1st ch, pull up lp (3 lps on hk), yo, and draw through 1st lp just made (ch made + 3 lps on hk), yo, draw through 2 lps, (2 lps on hk), yo and draw through rem 2 lps on hk.

Each st after: yo, insert hk into ch made, yo and pull through ch (3 lps on hk) yo and draw through 1st lp just made (ch made + 3 lps on hk, pinch or m ch), yo, draw through 2 lps, (2 lps on hk), yo and draw through rem 2 lps on hk.

Color Changing Within a Row

With your next color ready, begin the final st before changing colors. Switch to the next color for your final yo, pulling the new color up as the final loop on your hook. Begin your next st with the new color as normal.

PATTERN BEGINS

COWL

Note: Join color B as indicated in chart.

Rnd 1: Make 90 Fdc, PM and join to work in the round being careful not to twist – 90 dc.

Rnd 2-15 Work Rnds 2-15 of Diamond Color Chart. Patt will be repeated 15 times around.

Break color B, do not break color A. Cont with color A only.

Rnd 15: Ch 3 (counts as dc), dc in each st around, sl st to 1st st. Fasten off.

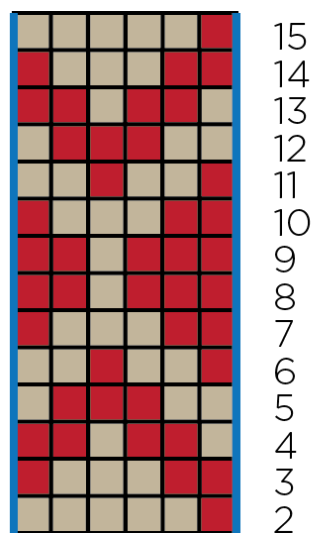
FINISHING

Gently wash and block to finished measurements. Weave in ends.

Abbreviations

| | |
|-------|----------------|
| bef | before |
| ch | chain |
| cont | continue |
| dc | double crochet |
| hk | hook |
| lp(s) | loop(s) |
| patt | pattern |
| rem | remain(ing) |
| rep | repeat |
| rnd | round |
| sl | slip |
| st(s) | stitch(es) |
| yo | yarn over |

Diamond
Color Chart



6 stitch repeat

Key

| | |
|--|------------------|
| | pattern repeat |
| | with color A, dc |
| | with color B, dc |



PATTERN COLLECTION

Accessories



Mirror Image Cowl: Knit

Designed by Ashley Jane McIntyre

DIFFICULTY

Intermediate

SIZES

One Size

FINISHED MEASUREMENTS

Circumference: 31"

Height: 7"

MATERIALS

[Universal Yarn Minou](#) (52% nylon, 40% baby alpaca, 8% merino wool; 50g/158 yds)

- 101 Borzoi (B) - 1 ball
- 108 Tanager (A) - 1 ball

Needle: US Size 10 (6 mm) 16-24"

circular, *or size needed to obtain gauge*

Notions: Tapestry needle, stitch markers

GAUGE

15 sts x 19 rnds = 4" in Diamond Color patt

Save time, check your gauge.

PATTERN NOTES

Fuzzy, colorful fun begins with our Minou yarn. Spun in Italy, this luxurious blend of baby alpaca, merino wool, and nylon will make you fall in love with eyelash yarns. The rich texture of the yarn is paired perfectly with its soft feel and surprising warmth. The Mirror Image Cowl makes the most of 2 balls of Minou, with a color work Diamond pattern that pops. Best part? We have a knit and crochet version of this pattern, so choose a hook or needles and get started! Bonus points if you and your crafty bestie make matching cowls.

This cowl is knit in the round from the bottom up using stranded colorwork.

PATTERN BEGINS

COWL

Note: Join color B as indicated in chart.

With color A, cast on 114 sts. PM and join to knit in the rnd, being careful not to twist.

Knit 3 rnds.

Work Rnds 1-28 of Diamond Color Chart. Patt will be repeated 19 times around.

Break color B, do not break color A. Cont with color A only.

Knit 3 rnds. Bind off all sts kwise.

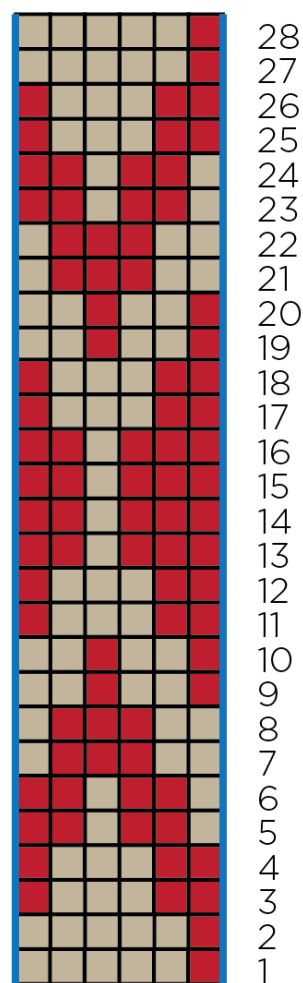
FINISHING

Gently wash and block to finished measurements. Weave in ends.

Abbreviations




| | |
|--------|--------------|
| cont | continue |
| kwise | knitwise |
| patt | pattern |
| pm | place marker |
| rnd(s) | round(s) |
| st(s) | stitch(es) |

Diamond
Color Chart



6 stitch repeat

Key

-  pattern repeat
-  with color A, knit
-  with color B, knit