



PATTERN COLLECTION

Crochet



Painted Canvas Poncho

Designed by Rosann Fleischauer

DIFFICULTY

Intermediate

SIZES

XS/S (M/L, 1X/2X, 3X/4X)

Shown in Small XS/S with approx. 3" of positive ease across Front Bust Width.

FINISHED MEASUREMENTS

Front Bust Width: 17 (21, 25, 29)" *See Pattern Notes when selecting a size.*

Back Length: 24 $\frac{1}{4}$ (24 $\frac{1}{4}$, 25 $\frac{1}{4}$, 25 $\frac{1}{4}$)"

MATERIALS

Universal Yarn Colorburst (65% superwash fine merino, 35% acrylic; 200g/660 yds)

- 109 Spring – 3 (4, 5, 5) balls

Hook: US Size G/6 (4 mm) *or size needed to obtain gauge*

Notions: Tapestry needle, 6 locking removable stitch markers, 10 fabric clips

GAUGE

24 sts x 23 rows = 4" in Linen Stitch

Save time, check your gauge.

PATTERN NOTES

This crochet poncho is a perfect canvas for the beautiful color shifts in Colorburst. Worked in Linen Stitch and featuring a clever construction method, this poncho is as simple to make as it is to wear. We love layering it over a breezy summer dress while the weather is warm, but it will keep you just as cozy during the cooler months. This multi-season garment is irresistible!

This poncho features an oversized fit and allows for a generous amount of ease around the bust due to the open nature of the armholes. For best results, when selecting a size, divide your bust measurement in half. Then choose the size with the Front Bust Width closest to that measurement.

The Front and Back panels of this poncho are worked flat from side to side. Mattress stitch is used for joining the two panels.

Edging of armholes and neckline as presented are finished in a crab stitch. To modify edging, test your preferred edging on a gauge swatch to ensure desired result.

The Back panel is approximately 2" longer than the front for additional comfort and coverage, this may be made longer as well if desired. The longer the back panel, the bigger the armhole openings will become when assembled therefore adjust the number of stitches during final finishing at a rate of approximately 1 crab stitch per 1½ sc because the crab stitch is serving a dual purpose, first to tighten up the arm hole and second to provide a neatly finished edge. If the crab stitches are applied at the same rate as the sc present, the edge will have more drape than that in the sample as shown.

The number of crab stitches executed on the Front is two less than that of the Back because it is difficult to work a crab stitch into a sharp corner, skipping the corner stitch fools the eye into perceiving the neckline as more rounded than squared off.

STITCH GUIDE

Linen Stitch

(Chain a multiple of 2 sts, plus 2)

Row 1 (RS): Sc in 2nd ch from hk, *ch 1, sk next ch, sc in next ch; rep from * across, turn.

Row 2 (WS): Ch 1, sc in first st, ch 1, sk next st, *sc in next ch-1 sp, ch 1, sk next st; rep from * across to last st, sc in last st, turn.

Row 3: Ch 1, sc in first st, *sc in next ch 1 sp, ch 1, sk next st; rep from * across to last st, sc in last st, turn.

Rep Rows 2-3 for patt.

BACK

Ch 146 (146, 152, 152), turn work.

Work in Linen Stitch (see Stitch Guide) until piece meas 37 (45, 53, 61)" or desired width, ending with a WS row – 144 (144, 150, 150) sts.

Work 1 row sc.

Fasten Off.

Cut yarn leaving 3" tail and weave in end.

FRONT

First Shoulder to Neckline

Ch 134 (134, 140, 140), turn work.

Work in Linen Stitch (see Stitch Guide) until piece meas 5 (7, 9, 10)" from foundation ch, ending with a WS row – (132 (132, 138, 138) sts.

Neck

Turn work, beg working RS row until 10 sts rem. Turn work and work WS row – 122 (122, 128, 128) sts).

Cont in patt on rem 122 (122, 128, 128) sts until Neck meas 7" in length ending with a RS row.

Neckline to Second Shoulder

Chain 12, turn work.

Row 1 (WS): Sc in 2nd ch from hk, [ch 1, sk next ch, sc in next ch] 4 times, * ch 1, sk next st, sc into next ch 1 sp, rep from * across, turn – 132 (132, 138, 138) sts.

Row 2 (RS): Ch 1, sc in first st, * sc in next ch-1 sp, ch 1, sk next st; rep from * across to last st, sc in last st, turn.

Row 3 (WS): Ch 1, sc in first st, ch 1, sk next st, * sc in next ch-1 sp, ch 1, sk next st; rep from * across to last st, sc in last st, turn.

Rep Rows 2-3 until piece meas 17 (21, 25, 29)" from foundation chain, ending with a WS row.

Work 1 row sc

Fasten Off.

Cut yarn leaving 3" tail and weave in end.

FINISHING

Note: Schematics and an assembly diagram are included to help you visualize the construction.

Gently wash and block pieces to measurements.

After allowing the pieces to air dry, along the selvedge edges place markers at the center points of both edges of both pieces. Using center markers as a guide, place the Back down with RS facing. Place Front atop Back with WS facing so the two RS face each other. The markers will not touch each other they are used to visually align the center axis of both pieces. Using 2 fabric clips on each side of the Front Shoulders secure the Shoulders to the Back. Fold the top right corner of the Back down to meet the edge of the Front, secure with a fabric clip. Rep for top left corner of the Back along opposing edge of Front. Bring the bottom right corner of the Back up to meet the top right corner of the Back along the edge of the Front. Secure with clip, this will cause the bottom of the piece to roll a bit, this is to be expected as the back is longer than the front to accommodate the curves of the body. Rep for bottom left corner.

Using additional fabric clips as needed, secure the edges in preparation for seaming. These clips will be removed as the piece is seamed. Using them helps to maintain the alignment of the panels while the seaming takes place much like when one pins pieces of fabric before sewing them on a sewing machine. Beg at lower left, using tapestry needle and piece of yarn roughly $2\frac{1}{2}$ times as long as the desired seam from the bottom hem to the neckline, sew seam along the edge. When you approach the point where the two corners are clipped together, the last stitch of the lower corner should be worked at the same time as the first stitch of the upper corner to create a tight join. Cont in mattress stitch to edge of neckline. Fasten off and secure yarn. Weave tail back through on WS of fabric. Rep for second side.

Turn work so RS is facing on both front and back. Using same size hk as the pieces were worked in, pick up a loop at the point where the two corners meet. Crab stitch along first armhole a total of 75 (75, 83, 83) sts, Fasten off, secure and weave in end. Rep for second arm.

Using the same hk, at the point where the inside edge of the Front shoulder meets the Back, pull up a loop and work 25 (25, 25, 32) crab stitches. Cont down the opposing side of the neck 5 sts, along the front work 23 (23, 23, 30) sts, and up the second neck edge an additional 5 sts. Join and fasten off. Secure tail to WS of work.

Weave in rem ends.

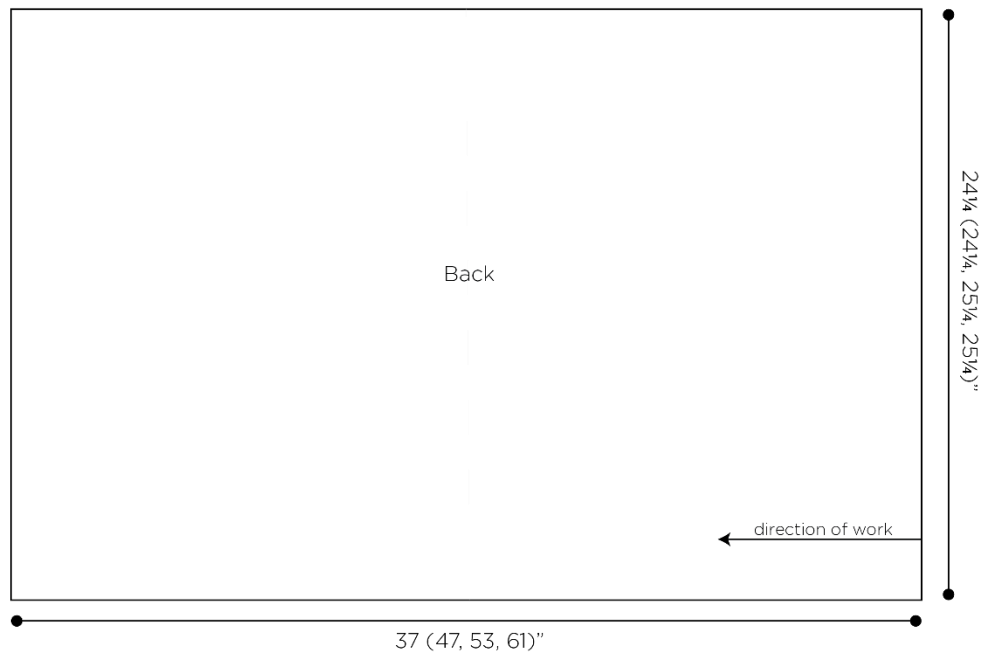
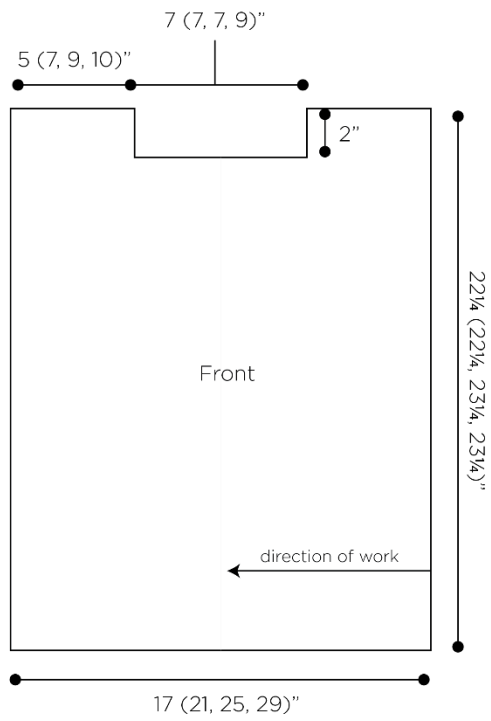


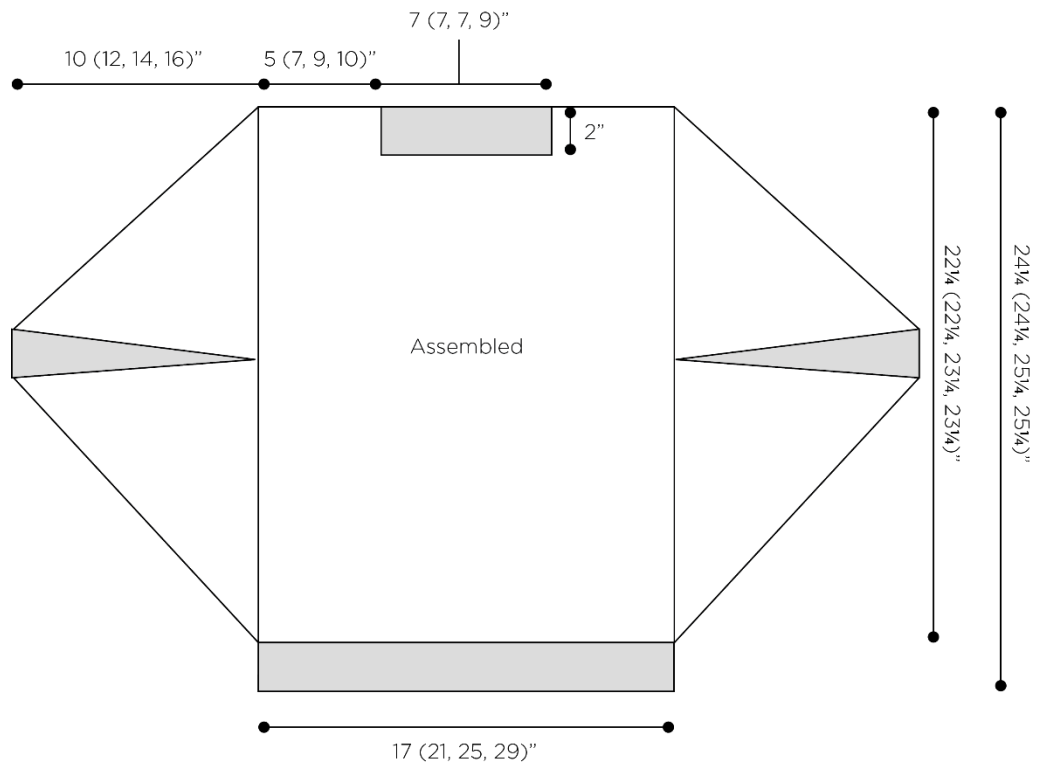
Optional Finishing:

For a more professional fit, the edges of the shoulder can be softened by adding an additional seam on the inside of the piece as follows:

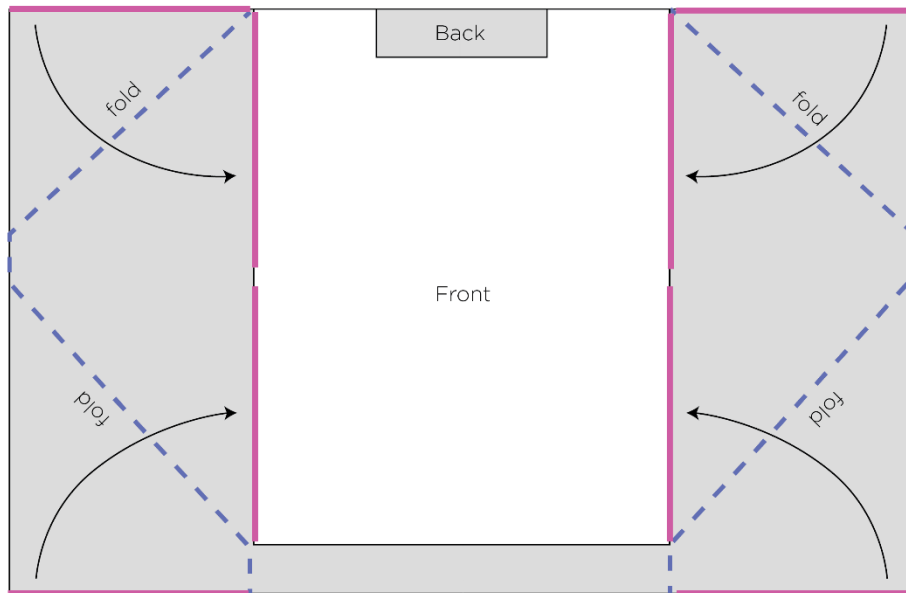
Turn work inside out, WS facing.

Using tapestry needle and 12" piece of yarn, insert needle through the seam of the side 1" down from the point where the shoulder corner is formed. Sew at a 45 degree angle to the same point on the shoulder seam. Rep for second side. Weave in ends.





Assembly Diagram



- seam
- fold
- Back
- Front