



## Pattern Collection: Accessories



### **Olive**

Designed by Rachel Brockman

### **DIFFICULTY**

Easy

### **SIZES**

Adult Medium

### **FINISHED MEASUREMENTS**

**Brim Circumference:** 19½"

**Length:** 9"

### **MATERIALS**

**Universal Yarn *Penna*** (50% baby suri alpaca, 28% extrafine merino, 22% nylon; 25g/186 yds)

- 103 Smudge (A) – 1 ball

**Fibra Natura *Kingston Tweed*** (50% wool, 25% alpaca, 25% viscose; 50g/194 yds; 50g/230 yds)

- 106 Olivine (B) – 1 skein

**Needles:** US Size 6 (4 mm) straight, 16" circular, and DPNs (or your preferred needle for knitting small circumferences)

**Notions:** Tapestry needle, cable needle, stitch markers, stitch holder or waste yarn

### **GAUGE**

26 sts x 33 rows = 4" in Cable Panel patt with A and B held together as one strand  
23 sts x 32 rnds = 4" in Broken Rib with A and B held together as one strand

*Knit. Relax. Smile. Repeat!*

2020 © Universal Yarn, Inc.

All rights reserved.

This pattern may not be reproduced for business, trade or sale.

## PATTERN NOTES

Beautiful accessories often begin with beautiful yarns. Kingston Tweed provides an earthy feel and lovely tweedy nubs, and Penna offers a light, airy, halo you'll fall in love with. When held together, these two are a textural dream. The Olive Hat's braid style cable brim and broken rib body accentuate that lovely texture to it's fullest. It'll keep you toasty warm too!

This hat begins with a cable panel that is worked flat. After the correct length is achieved, each end is sewn together. Then stitches are picked up around one edge and worked in the round, decreasing to the crown.

## STITCH GUIDE

### 3x3 Left Cross (LC)

Slip 3 sts to cn and hold in front, k3 from LH ndl, k3 from cn.

### 3x3 Right Cross (RC)

Slip 3 sts to cn and hold in back, k3 from LH ndl, k3 from cn.

### Broken Rib

*(even number of sts)*

**Rnd 1:** Knit.

**Rnd 2:** \* P1, k1; rep from \* to end.

Rep Rnds 1-2 for patt.

### Cable Panel

*(panel of 24 sts)*

**Row 1 (RS):** K2, p1, k17, p1, k3.

**Row 2 (WS):** P2, k1, p1, k1, p6, k1, p1, k1, p6, [k1, p1] 2 times.

**Rows 3-4:** Rep Rows 1-2.

**Row 5:** K2, p1, k1, 3x3 RC, k3, 3x3 LC, k1, p1, k3.

**Row 6:** Rep Row 2.

Rep Rows 1-6 for patt.

### Brim

With straight ndl, cast on 24 sts.

**Row 1 (RS):** Work Row 1 of Cable Panel to end.

**Row 2 (WS):** Work Row 2 of Cable Panel to end.

Cont as est'd through Row 6 of Cable Panel, then rep Rows 1-6 of patt, 26 more times, or until

piece meas approx. 19½" from cast-on edge. Bind off all sts.

Sew cast-on and bind-off edge of Brim together using mattress stitch.

*Note: The left side of the panel, where there are 2 stitches maintained in St st, is considered the top of the Brim.*

### Main Hat

Beg at seam, with 16" circ ndl, pick up and knit 112 sts evenly around the top circumference of Brim, picking up from the left. PM and join in the rnd.

Work in Broken Rib until piece meas 2½" from picked up edge, or approx. 6¼" from bottom of Brim, ending with Rnd 2 of patt.

### Shape Crown

*Note: Change to dpns when there are too few sts to fit comfortably on 16" circular ndl.*

**Set-up Rnd:** [Cont as est'd over 16 sts, pm] 7 times.

**Dec Rnd:** \* Cont as est'd to 2 sts bef m, k2tog, sl m; rep from \* to end – 7 sts dec'd, 105 sts rem.

**Even Rnd:** Cont as est'd to end.

Rep Dec Rnd and Even Rnd, 5 more times – 70 sts rem.

Rep Dec Rnd every rnd, 8 times – 56 sts dec'd, 14 sts rem.

**Next Rnd:** \* K2tog; rep from \* to end – 7 sts dec'd, 7 sts rem.

Break yarn leaving approx. 8" tail. Thread tail through rem live sts. Pull taut to close.

### FINISHING

Gently wash and block to finished measurements. Weave in ends.

*Knit. Relax. Smile. Repeat!*

2020 © Universal Yarn, Inc.

All rights reserved.

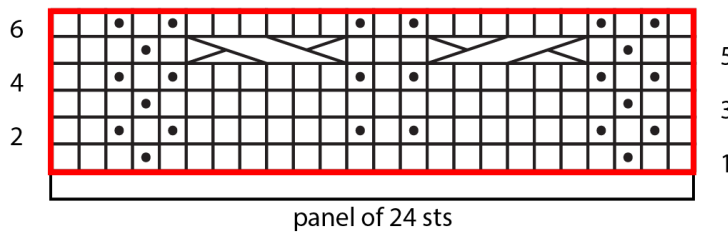
This pattern may not be reproduced for business, trade or sale.

## Abbreviations

<b>approx</b>	approximately
<b>bef</b>	before
<b>beg</b>	begin(ning)
<b>circ</b>	circular
<b>cn</b>	cable needle
<b>cont</b>	continue
<b>dec('d)</b>	decrease(d)
<b>est'd</b>	established
<b>k</b>	knit
<b>k2tog</b>	knit 2 stitches together (1 st dec'd)
<b>LC</b>	left cross
<b>LH</b>	left hand
<b>m</b>	marker
<b>meas</b>	measures
<b>ndl</b>	needle
<b>p</b>	purl
<b>patt</b>	pattern

<b>pm</b>	place marker
<b>RC</b>	right cross
<b>rem</b>	remain(ing)
<b>rep</b>	repeat
<b>rnd</b>	round
<b>RS</b>	right side
<b>sl</b>	slip
<b>St st</b>	Stockinette stitch (knit on RS rows, purl on WS rows; in the rnd, knit every rnd)
<b>st(s)</b>	stitch(es)
<b>WS</b>	wrong side

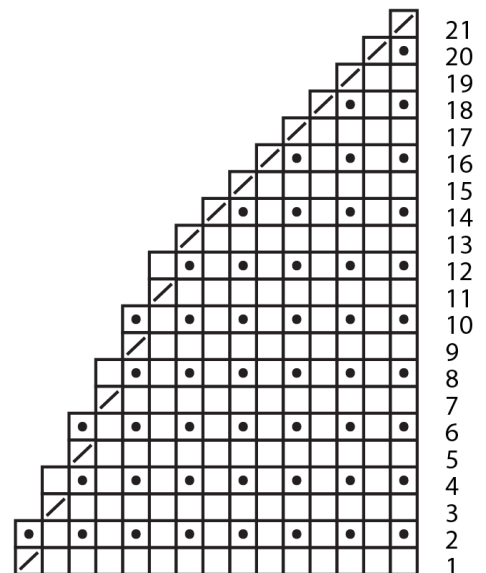
### Cable Panel



panel of 24 sts

- pattern repeat
  - knit on RS, purl on WS
  - purl on RS, knit on WS
- 
- 3x3 RC
  - 3x3 LC

### Crown



*Knit. Relax. Smile. Repeat!*

2020 © Universal Yarn, Inc.

All rights reserved.

This pattern may not be reproduced for business, trade or sale.