



Pattern Collection: Accessories



Pyramid Scarf

Designed by Universal Yarn Design Team

FINISHED MEASUREMENTS

Width: 8¾"

Length: 70"

MATERIALS

Universal Yarn Odette (61% superwash fine merino, 22% nylon, 17% alpaca; 50g/241 yds)

- 107 Rose Villa – 2 skeins

Needles: US Size 7 (4.5 mm) straight or your preferred needle for knitting flat or size needed to obtain gauge

Notions: Tapestry needle

GAUGE

22 sts x 34 rows = 4" in Pyramid Stitch

Save time check your gauge.

PATTERN NOTES

The Pyramid Scarf is soft, hazy, and lustrous. It's sure to keep you warm on a breezy day, but it's light as a feather and won't weigh you down.

This scarf is knit flat in one piece from the bottom up.

SCARF

Cast on 49 sts.

Lower Edge

Rows 1-6: Knit.

Pyramid Stitch Section

Note: This section is also charted for your convenience.

Row 1 (WS): K3, [p1, k13] 3 times, p1, k3.

Row 2 (RS): K4, m1L, [p5, SSPP2, p5, m1R, k1, m1L] 2 times, p5, SSPP2, p5, m1R, k4.

Row 3: K3, p2, [k11, p3] 2 times, k11, p2, k3.

Row 4: K4, m1L, [k1, p4, SSPP2, p4, k1, m1R, k1, m1L] 2 times, k1, p4, SSPP2, p4, k1, m1R, k4.

Row 5: K3, p3, [k9, p5] 2 times, k9, p3, k3.

Row 6: K4, m1L, [k2, p3, SSPP2, p3, k2, m1R, k1, m1L] 2 times, k2, p3, SSPP2, p3, k2, m1R, k4.

Row 7: K3, p4, [k7, p7] 2 times, k7, p4, k3.

Row 8: K4, m1L, [k3, p2, SSPP2, p2, k3, m1R, k1, m1L] 2 times, k3, p2, SSPP2, p2, k3, m1R, k4.

Row 9: K3, p5, [k5, p9] 2 times, k5, p5, k3.

Row 10: K4, m1L, [k4, p1, SSPP2, p1, k4, m1R, k1, m1L] 2 times, k4, p1, SSPP2, p1, k4, m1R, k4.

Row 11: K3, p6, [k3, p11] 2 times, k3, p6, k3.

Row 12: K4, m1L, [k5, SSPP2, k5, m1R, k1, m1L] 2 times, k5, SSPP2, k5, m1R, k4.

Row 13: K10, [p1, k13] 2 times, p1, k10.

Row 14: K3, ssp [p5, m1R, k1, m1L, p5, SSPP2] 2 times, p5, m1R, k1, m1L, p5, p2tog, k3.

Row 15: K9, [p3, k11] 2 times, p3, k9.

Row 16: K3, ssp [p4, k1, m1R, k1, m1L, k1, p4, SSPP2] 2 times, p4, k1, m1R, k1, m1L, k1, p4, p2tog, k3.

Row 17: K8, [p5, k9] 2 times, p5, k8.

Row 18: K3, ssp [p3, k2, m1R, k1, m1L, k2, p3, SSPP2] 2 times, p3, k2, m1R, k1, m1L, k2, p3, p2tog, k3.

Row 19: [K7, p7] 3 times, k7.



Row 20: K3, ssp [p2, k3, m1R, k1, m1L, k3, p2, SSPP2] 2 times, p2, k3, m1R, k1, m1L, k3, p2, p2tog, k3.

Row 21: K6, [p9, k5] 2 times, p9, k6.

Row 22: K3, ssp [p1, k4, m1R, k1, m1L, k4, p1, SSPP2] 2 times, p1, k4, m1R, k1, m1L, k4, p1, p2tog, k3.

Row 23: K5, [p11, k3] 2 times, p11, k5.

Row 24: K3, ssp [k5, m1R, k1, m1L, k5, SSPP2] 2 times, k5, m1R, k1, m1L, k5, p2tog, k3.

Rows 1-24 establish patt. Rep Rows 1-24 until piece meas approx 69½" from cast-on edge, ending with Row 24 of patt.

Upper Edge

Rows 1-6: Knit.

Bind off all sts.

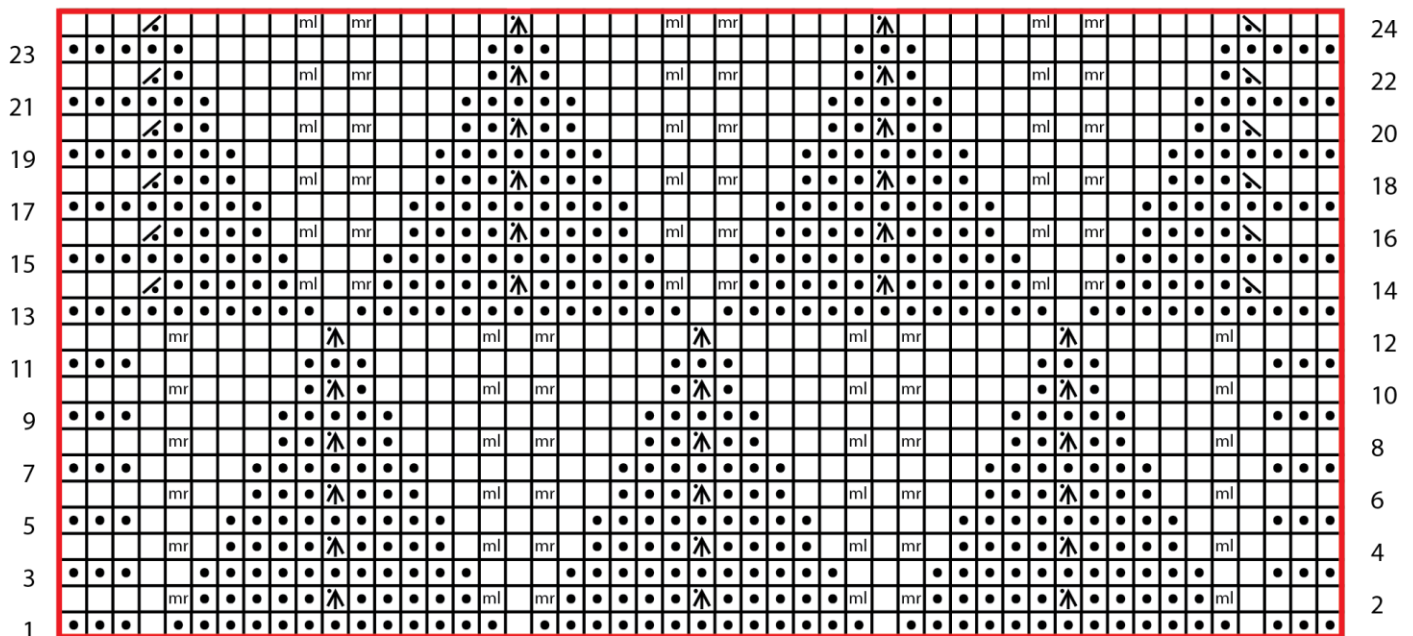
FINISHING

Gently wash and block to finished measurements. Weave in ends.

Abbreviations

approx	approximately	patt	patt
k	knit	rep	repeat
m1L	insert left needle from front to back under horizontal strand of yarn lying between st just worked and next st, knit or purl this st through the back loop (1 st inc'd)	RS	right side
m1R	insert left needle from back to front under horizontal strand of yarn lying between st just worked and next st, knit or purl this st through the front loop (1 st inc'd)	ssp	slip next 2 sts individually knitwise, slip them back to left needle in this position, purl them together through the back loops (1 st dec'd)
meas	measures	SSPP2	slip 2 stitches knitwise, return these 2 stitches to left needle and then slip them as if to p2tog through back loops, purl 1, pass 2 slipped stitches over purl stitch; centered double decrease
p2tog	purl 2 sts together (1 st dec'd)	st(s)	stitch(es)
p	purl	WS	wrong side

Pyramid Stitch



Key

knit on RS, purl on WS	p2tog
purl on RS, knit on WS	ssp
m1L	SSPP2
m1R	pattern repeat