



Pattern Collection: Home



Watermelon Blanket

Designed by Aubrey Busek

DIFFICULTY

Easy

FINISHED MEASUREMENTS

Width: 36"

Length: 37¾"

MATERIALS

Universal Yarn Cotton Supreme (100% cotton; 100g / 180yds)

- 607 Blush (MC) – 5 skeins
- 601 Celery (CC) – 1 skein (*see Pattern Notes*)

Needle: US Size 8 (5 mm) 24" circular or longer (to accommodate large number of sts) *or size needed to obtain gauge*

Notions: Tapestry needle, stitch markers

GAUGE

18 sts x 24 rows = 4" in Diagonals patt.

Save time, check your gauge.

Knit. Relax. Smile. Repeat!

2020 © Universal Yarn, Inc.

All rights reserved.

This pattern may not be reproduced for business, trade or sale.

PATTERN NOTES

The Watermelon Blanket is a fun project to add some color and graphic texture into your little one's nursery. Knit in Cotton Supreme, this easy-care blanket is soft and touchable, with plenty of options for different color combinations.

This blanket is knit flat. The intarsia method is used to change colors for the side borders. When changing colors, bring the old color up and around the new color to prevent holes from forming and use a separate ball for the sections.

When winding the contrast color, break the skein evenly in half for the intarsia method. Please note that the CC takes up nearly an entire skein of yarn. You may wish to purchase a second skein as insurance.

STITCH GUIDE

Diagonals

(multiple of 10 sts)

Row 1 (RS): * P1, k5, p4; rep from * to end.

Row 2 (WS): * K3, p5, k2; rep from * to end.

Row 3: * P3, k5, p2; rep from * to end.

Row 4: * K1, p5, k4; rep from * to end.

Row 5: * P5, k5; rep from * to end.

Row 6: * P4, k5, p1; rep from * to end.

Row 7: * K2, p5, k3; rep from * to end.

Row 8: * P2, k5, p3; rep from * to end.

Row 9: * K4, p5, k1; rep from * to end.

Row 10: * K5, p5; rep from * to end.

Rep Rows 1-10 for patt.

BLANKET

Lower Border

With CC, cast on 156 sts. Knit 11 rows in garter st.

Next Row (WS): K8, pm, knit to last 8 sts, pm, k8.

Main Blanket

Note 1: You may wish to place markers between pattern repeats to help you stay on track.

Note 2: This section is also charted for your convenience.

Row 1 (RS): With CC k8, sl m, with MC work Row 1 of Diagonals patt to m, sl m, with new ball of CC k8. Patt is repeated 14 times across each row.

Row 2 (WS): With CC k8, sl m, with MC, work Row 2 of Diagonals patt to m, sl m, with CC k8. Cont as est'd through Row 10 of Diagonals patt, then rep Rows 1-10 until piece meas approx 36¼" from cast-on edge, ending with Row 4 of patt. Break MC, cont with CC only.

Upper Border

With CC, work 12 Rows in garter st. Piece meas approx 37¾" from cast-on edge. Bind off all sts.

FINISHING

Weave in ends. Wash and block to finished measurements.

Abbreviations

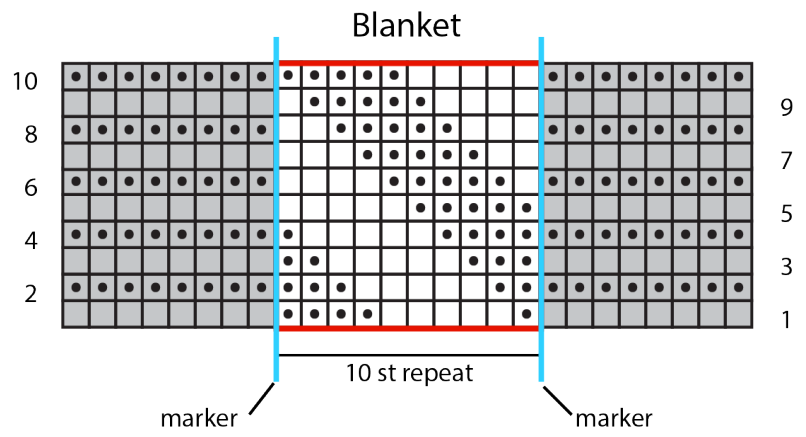
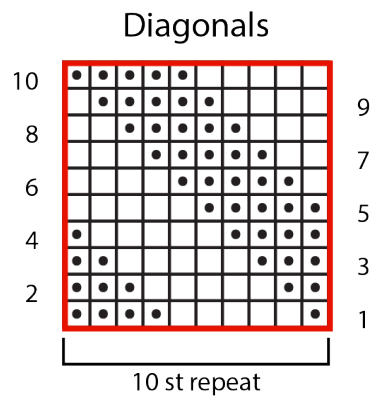
| | |
|------------------|----------------|
| approx | approximately |
| CC | contrast color |
| cont | continue |
| est'd | established |
| garter st | knit every row |
| k | knit |
| m | marker |
| MC | main color |
| meas | measures |
| p | purl |
| patt | pattern |
| pm | place marker |
| rep | repeat |
| RS | right side |
| sl | slip |
| st(s) | stitch(es) |
| WS | wrong side |

Knit. Relax. Smile. Repeat!

2020 © Universal Yarn, Inc.

All rights reserved.

This pattern may not be reproduced for business, trade or sale.



Key

- indicates marker
- pattern repeat
- with MC knit on RS, purl on WS
- with MC purl on RS, knit on WS
- with CC knit on RS, purl on WS
- with CC purl on RS, knit on WS

Knit. Relax. Smile. Repeat!

2020 © Universal Yarn, Inc.

All rights reserved.

This pattern may not be reproduced for business, trade or sale.