



Pattern Collection: Accessories



Welkin

Designed by Rachel Brockman

DIFFICULTY

Intermediate

SIZES

One Size

FINISHED MEASUREMENTS

Wingspan (along bottom edge): 80"

Depth at Center: 26"

MATERIALS

Rozetti Yarns Nymph (84% cotton, 16% polyamide; 50g/167 yds)

- 107 Taiga (A) – 4 skeins
- 113 Swan (B) – 3 skeins

Needles: US Size 7 (4.5 mm) 40" circular (to accommodate large number of sts) *or size needed to obtain gauge*

Notions: Tapestry needle, stitch markers, US 7 (4.5 mm) crochet hook (or similar size)

GAUGE

18 sts x 29 rows = 4" in Stockinette stitch (St st)

Save time, check your gauge.

Knit. Relax. Smile. Repeat!

2021 © Universal Yarn, Inc.

All rights reserved.

This pattern may not be reproduced for business, trade or sale.

Questions? Contact patterns@universalyarn.com

PATTERN NOTES

Welkin is a shawl inspired by lofty clouds floating across the beautiful blue sky while a gentle breeze brushes your shoulders on pleasant Spring days. Knit in Nymph, this lightweight accessory is downy soft with an ethereal halo.

This crescent-shaped shawl is knit flat from the top down. Two increases are worked on every row (right side and wrong side). The shawl is finished with a crochet picot trim.

SHAWL

Starting Tab

With color A, cast on 4 sts. Knit 7 rows in garter st.

Set-up Row 1 (RS): K4, rotate work 90 degrees, pick up and knit 3 sts from side of Tab, pick up and knit 4 sts from cast-on edge – 11 sts.

Set-up Row 2 (WS): K3, pm, pfb, p3, pfb, pm, k3 – 2 sts inc'd, 13 sts. Join color B, do not break color A.

Stripe Section

Row 1: With color B, k3, sl m, kfb, knit to 1 st bef m, kfb, sl m, k3 – 2 sts inc'd, 15 sts.

Row 2: With color B, k3, sl m, pfb, purl to 1 st bef m, pfb, sl m, k3 – 2 sts inc'd, 17 sts.

Row 3: With color A, k3, sl m, kfb, knit to 1 st bef m, kfb, sl m, k3 – 2 sts inc'd, 19 sts.

Row 4: With color A, k3, sl m, pfb, purl to 1 st bef m, pfb, sl m, k3 – 2 sts inc'd, 21 sts.

Rep Rows 1-4, 33 more times, then rep Rows 1-2, 1 more time – 268 sts inc'd, 289 sts. Break color B, cont with color A only.

Lace Section

Note 1: This section is also charted for your convenience.

Note 2: You may wish to place markers between each pattern repeat to help you stay on track.

Row 1 (RS): K3, sl m, kfb, * k1, yo, ssk, k5, k2tog, yo; rep from * to 2 sts bef m, k1, kfb, sl m, k3 – 2 sts inc'd, 291 sts.

Row 2 (WS): K3, sl m, pfb, purl to 1 st bef m, pfb, sl m, k3 – 2 sts inc'd, 293 sts.

Row 3: K3, sl m, kfb, k2, * k2, yo, ssk, k3, k2tog, yo, k1; rep from * to 4 sts bef m, k3, kfb, sl m, k3 – 2 sts inc'd, 295 sts.

Row 4: Rep Row 2 – 2 sts inc'd, 297 sts.

Row 5: K3, sl m, kfb, k2tog, yo, k2, * k3, yo, ssk, k1, k2tog, yo, k2; rep from * to 6 sts bef m, k3, yo, ssk, kfb, sl m, k3 – 2 sts inc'd, 299 sts.

Row 6: Rep Row 2 – 2 sts inc'd, 301 sts.

Row 7: K3, sl m, kfb, yo, S2KP2, yo, k3, * k4, yo, S2KP2, yo, k3; rep from * to 8 sts bef m, k4, yo, S2KP2, yo, kfb, sl m, k3 – 2 sts inc'd, 303 sts.

Row 8: Rep Row 2 – 2 sts inc'd, 305 sts.

Row 9: K3, sl m, kfb, k4, yo, k2, ssk, * k1, k2tog, k2, yo, k1, yo, k2, ssk; rep from * to 10 sts bef m, k1, k2tog, k2, yo, k4, kfb, sl m, k3 – 2 sts inc'd, 307 sts.

Row 10: Rep Row 2 – 2 sts inc'd, 309 sts.

Row 11: K3, sl m, kfb, * k1, k2tog, k2, yo, k1, yo, k2, ssk; rep from * to 2 sts bef m, k1, kfb, sl m, k3 – 2 sts inc'd, 311 sts.

Row 12: Rep Row 2 – 2 sts inc'd, 313 sts.

Row 13: K3, sl m, kfb, k2, * k1, k2tog, k2, yo, k1, yo, k2, ssk; rep from * to 4 sts bef m, k3, kfb, sl m, k3 – 2 sts inc'd, 315 sts.

Row 14: Rep Row 2 – 2 sts inc'd, 317 sts.

Row 15: K3, sl m, kfb, k2, k2tog, yo, * k1, yo, ssk, k5, k2tog, yo; rep from * to 6 sts bef m, k1, yo, ssk, k2, kfb, sl m, k3 – 2 sts inc'd, 319 sts.

Row 16: Rep Row 2 – 2 sts inc'd, 321 sts.

Row 17: K3, sl m, kfb, k3, k2tog, yo, k1, * k2, yo, ssk, k3, k2tog, yo, k1; rep from * to 8 sts bef m, k2, yo, ssk, k3, kfb, sl m, k3 – 2 sts inc'd, 323 sts.

Row 18: Rep Row 2 – 2 sts inc'd, 325 sts.

Row 19: K3, sl m, kfb, k1, yo, ssk, k1, k2tog, yo, k2, * k3, yo, ssk, k1, k2tog, yo, k2; rep from * to 10 sts bef m, k3, yo, ssk, k1, k2tog, yo, k1, kfb, sl m, k3 – 2 sts inc'd, 327 sts.

Row 20: Rep Row 2 – 2 sts inc'd, 329 sts.

Row 21: K3, sl m, kfb, * k4, yo, S2KP2, yo, k3; rep from * to 2 sts bef m, k1, kfb, sl m, k3 – 2 sts inc'd, 331 sts.

Row 22: Rep Row 2 – 2 sts inc'd, 333 sts.

Row 23: K3, sl m, kfb, k2, * k1, k2tog, k2, yo, k1, yo, k2, ssk; rep from * to 4 sts bef m, k3, kfb, sl m, k3 – 2 sts inc'd, 335 sts.

Row 24: Rep Row 2 – 2 sts inc'd, 337 sts.

Knit. Relax. Smile. Repeat!

2021 © Universal Yarn, Inc.

All rights reserved.

This pattern may not be reproduced for business, trade or sale.

Questions? Contact patterns@universalyarn.com

Row 25: K3, sl m, kfb, yo, k2, ssk, * k1, k2tog, k2, yo, k1, yo, k2, ssk; rep from * to 6 sts bef m, k1, k2tog, k2, yo, kfb, sl m, k3 – 2 sts inc'd, 339 sts.

Row 26: Rep Row 2 – 2 sts inc'd, 341 sts.

Row 27: K3, sl m, kfb, k2, yo, k2, ssk, * k1, k2tog, k2, yo, k1, yo, k2, ssk; rep from * to 8 sts bef m, k1, k2tog, k2, yo, k2, kfb, sl m, k3 – 2 sts inc'd, 343 sts.

Row 28: Rep Row 2 – 2 sts inc'd, 345 sts.

Row 29: K3, sl m, kfb, k6, k2tog, yo, * k1, yo, ssk, k5, k2tog, yo; rep from * to 10 sts bef m, k1, yo, ssk, k6, kfb, sl m, k3 – 2 sts inc'd, 347 sts.

Row 30: Rep Row 2 – 2 sts inc'd, 349 sts.

Row 31: K3, sl m, kfb, * k2, yo, ssk, k3, k2tog, yo, k1; rep from * to 2 sts bef m, k1, kfb, sl m, k3 – 2 sts inc'd, 351 sts.

Row 32: Rep Row 2 – 2 sts inc'd, 353 sts.

Row 33: K3, sl m, kfb, k2, * k3, yo, ssk, k1, k2tog, yo, k2; rep from * to 4 sts bef m, k3, kfb, sl m, k3 – 2 sts inc'd, 355 sts.

Row 34: Rep Row 2 – 2 sts inc'd, 357 sts.

Row 35: K3, sl m, kfb, k4, * k4, yo, S2KP2, yo, k3; rep from * to 6 sts bef m, k5, kfb, sl m, k3 – 2 sts inc'd, 359 sts.

Row 36: Rep Row 2 – 2 sts inc'd, 361 sts.

Break color A. Join color B.

Border & Picot Trim

Row 1 (RS): With color B, knit.

Loosely bind off all sts kwise. Do not break yarn. Turn work.

Picot Row (RS): With color A and using crochet hook, working through both loops of bound-off sts, * [Sl st, ch 3, sl st] in next st (picot made), sl st in next st; rep from * to last st, [Sl st, ch 3, sl st] in last st – 180 picots. Fasten off.

FINISHING

Weave in ends but do not trip. Wet or steam block, stretching to enhance lace. Once piece is fully dry, trim ends close to work.

Abbreviations

bef	before
ch	chain
circ	circular
inc('d)	increase(d)
k	knit
k2tog	knit 2 stitches together (1 st dec'd)
kfb	knit into front and back of next st (1 st inc'd)
kwise	knitwise
m	marker
meas	measures
ndl	needle
p	purl
pfb	purl into front and back of next st (1 st inc'd)
pm	place marker
rep	repeat
RS	right side
S2KP2	slip 2 stitches as if to knit 2 together, knit 1, pass 2 slipped stitches over knit stitch; centered double decrease
sl	slip
ssk	slip next 2 sts individually knitwise, slip them back to left needle in this position, knit them together through the back loops (1 st dec'd)
WS	wrong side
yo	yarn over

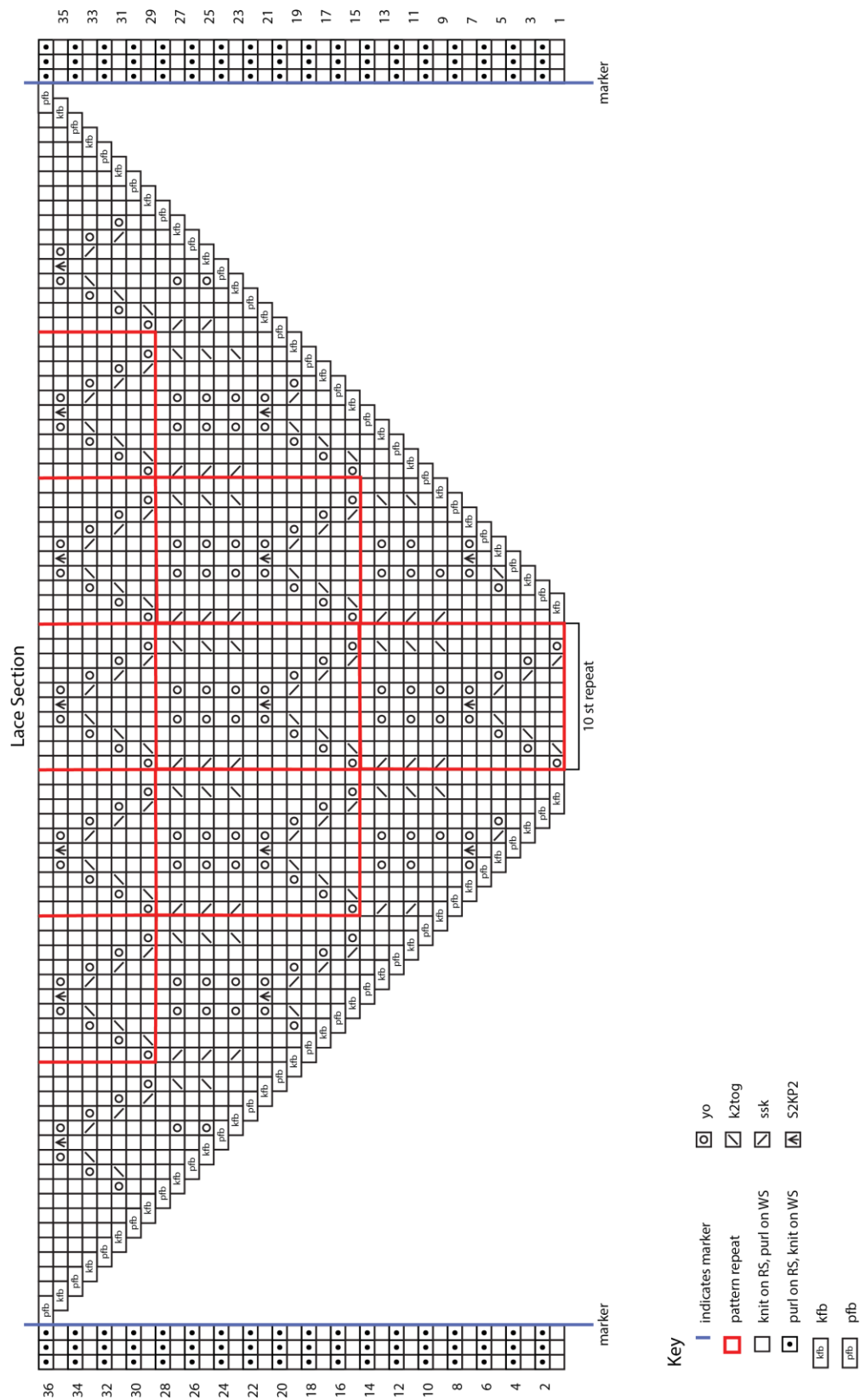
Knit. Relax. Smile. Repeat!

2021 © Universal Yarn, Inc.

All rights reserved.

This pattern may not be reproduced for business, trade or sale.

Questions? Contact patterns@universalyarn.com



Knit. Relax. Smile. Repeat!

2021 © Universal Yarn, Inc.

All rights reserved.

This pattern may not be reproduced for business, trade or sale.

Questions? Contact patterns@universalyarn.com